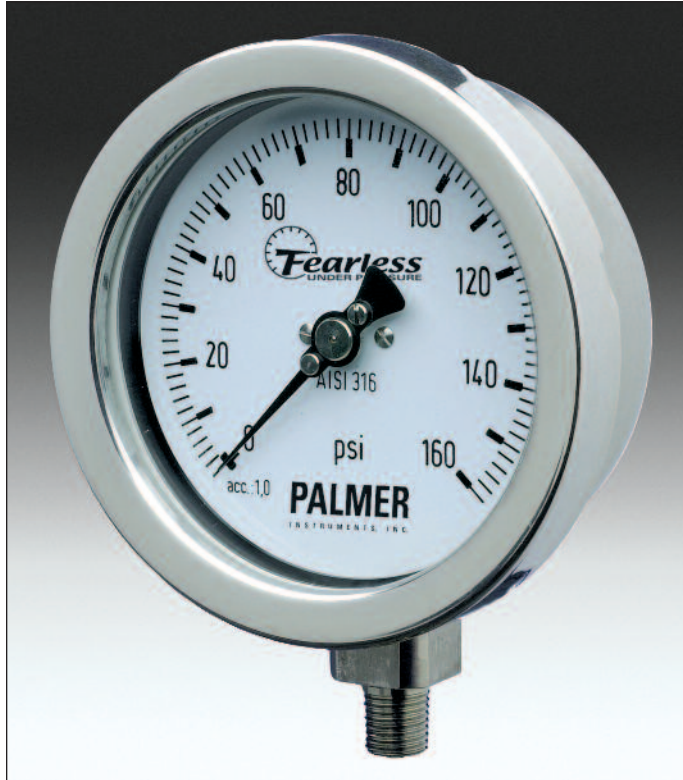


## Models 25SF • 40SF Fearless All Stainless Steel Gauges

Palmer Fearless Gauges offer Filled Gauge performance without the disadvantages of Liquid Filled.



- Vibration and Pulsation Resistant Readings similar to a Liquid Filled Gauge
- Easy Shipping, Handling, and Storage
- Long Instrument Life
- Low Maintenance
- In Situ Calibration
- Replaceable Crystal
- Accuracy  $\pm 1\%$
- No Possibility of Chemical Reactions From Fill Media when Dry

Palmer Fearless All Stainless Steel Gauges are the highest quality instruments available for gas or liquid media. Their rugged construction and watertight bayonet case/ring design is enhanced by Palmer's **Fearless** vibration and pulsation resistant **Dampened Movement**. The results are a Pressure Gauge suitable for demanding applications in all industries.

**IP54**  
COMPLIANT

### Specifications

**Case:** AISI 304 Stainless Steel Solid Front in 2-1/2" (63mm) and 4" (100mm) diameter watertight case.

**Fill:** Dry.

**Ring:** AISI 304 Stainless Steel Bayonet Bezel Ring.

**Window:** 3mm Instrument Quality Glass; Laminated Safety Glass and Acrylic optional.

**Socket:** AISI 316 Stainless Steel Socket and Tube, Argon welded.

**Connection:** 25SF - 1/4", 40SF - 1/2".

**Blow-Out Back:** 25mm diameter Perbunan Disc located at rear of case.

**Bourdon Tube:** AISI 316 Stainless Steel.

**Movement:** AISI Stainless Steel special Dampened Movement with wear-resistant, self-lubricating Delrin® gears.

**Pointer:** Balanced black Aluminum, micrometer adjustable.

**Dial:** White Aluminum with black markings in accordance with ASME B40.1 - 2005.

**Range Availability:** See matrix at right.

**Process Temperature Limits:** -67 to 212° (-55 to 100°C).

**Ambient Temperature Limits:** -67 to 176°F (-55 to 80°C).

**Overpressure Limits:** 30% of full scale value.

*Precision instruments from Palmer offer you the quality and reliability you rely on for your process!*



BEP Bestobell Ltd. • Toll Free: 1-800-668-3979 - QC 877-331-1225 • Phone: 905-826-1953 • [www.bestobell.com](http://www.bestobell.com)

# Models 25SF • 40SF Fearless All Stainless Steel Gauges



Fearless Gauge comparison to a Filled Gauge and a Dry Gauge under identical test conditions. Please note the effects of vibration on the Dry Gauge, as compared to the Fearless Gauge which is vibration and pulsation resistant, similar to a Filled Gauge.



## Ordering Guide

### 1) Case Size

- 25 2-1/2" (63mm)
- 40 4" (100mm)

### 2) Case Material / Style

- S Stainless Steel with Bayonet Ring

### 3) Element Material

- F Stainless Steel with Solid Front, Bayonet Bezel Ring

### 4) Fill

- D Dry

### 5) Mounting

- L Stem Mount, Lower Connected
- B Stem Mount, Back Connected
- U Flush Mount, Back Connected, U Clamp
- F Flush Mount, Back Connected, Front Flange
- I Surface Mount, Lower Connected, Rear Flange

### 6) Connection

- H 1/2" NPT (40SF only)
- Q 1/4" NPT (25SF only)

### 7) Range / Scale

#### PSI Ranges

- 15# 0-15psi
- 30# 0-30psi
- 60# 0-60psi
- 100# 0-100psi
- 160# 0-160psi
- 200# 0-200psi
- 300# 0-300psi
- 400# 0-400psi
- 800# 0-800psi
- 1000# 0-1000psi
- 1500# 0-1500psi
- 2000# 0-2000psi
- 3000# 0-3000psi
- 4000# 0-4000psi
- 5000# 0-5000psi
- 6000# 0-6000psi
- 7500# 0-7500psi
- 10,000# 0-10,000psi
- 15,000# 0-15,000psi

#### Compound Ranges

- 30" Hg/15# 30"Hg/0-15psi
- 30" Hg/30# 30"Hg/0-30psi
- 30" Hg/60# 30"Hg/0-60psi
- 30" Hg/100# 30"Hg/0-100psi
- 30" Hg/160# 30"Hg/0-160psi

#### Vacuum Range

- 30"Hg to 0

#### Metric Scales

- Bar, kg/cm<sup>2</sup>, kPa
- Single or Dual Ranges available



BEP Bestobell Ltd. • Toll Free: 1-800-668-3979 - QC 877-331-1225 • Phone: 905-826-1953 • www.bestobell.com

Register your product at [www.palmerwahl.com/register](http://www.palmerwahl.com/register)

Specifications subject to change without notice.

