



**BESTOBELL**  
**AQUATRONIX**

SINCE / DEPUIS 1953

[www.bestobell.com](http://www.bestobell.com)

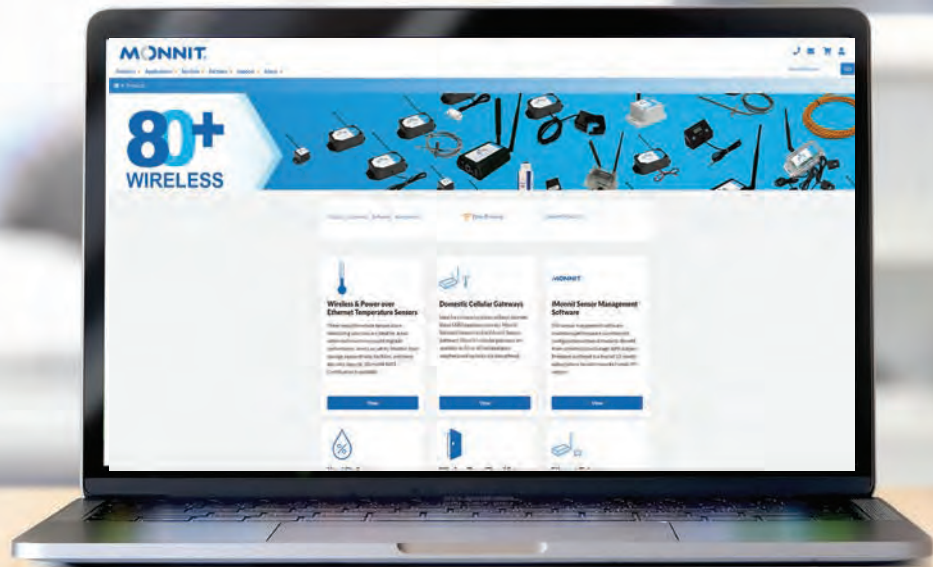
**MONNIT**®

**Remote Monitoring for Business**

2026 Product Catalog

V10.1.2026

# About Monnit

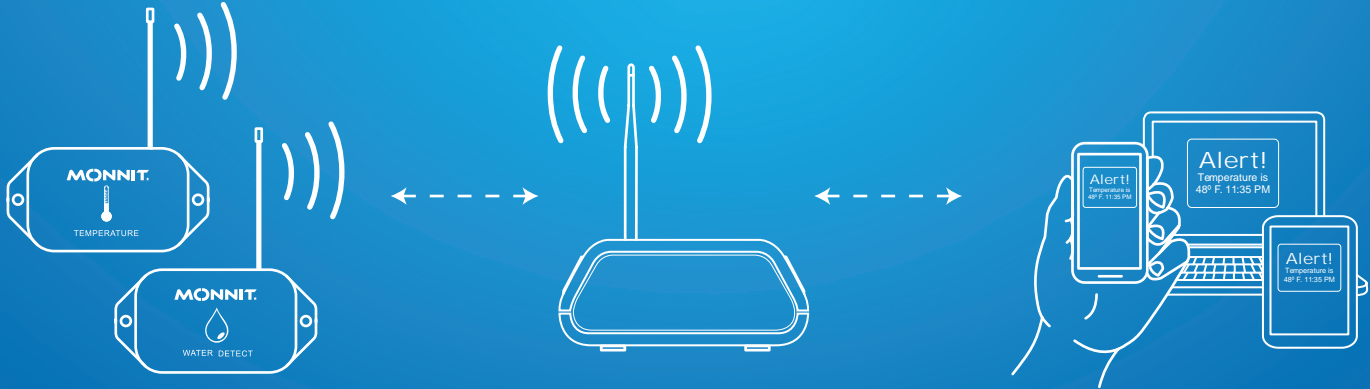


The origin story of the Internet of Things (IoT) begins with Monnit. Before our inception in 2010, we were already at the forefront of embedding technology into machines and devices to make them talk, delivering valuable data to business leaders.

Monnit Remote Monitoring Solutions for virtually any industry use case have delivered 43+ billion data points in more than 85 countries for 64,000 customers. Monnit's 80+ wireless IoT sensors remotely monitor temperature, light, humidity, motion, water, pressure, vibration, and much more. You can configure sensors and analyze data using iMonnit cloud software and get alerts via email, text, or call when our sensors detect a change you need to know.



# HOW MONNIT WORKS



## 80+ Wireless Sensors

Monitor Important Conditions

## Wireless Gateways

Relay Data to Software

## Software Choices

Get Remote Access to Dashboards / Alerts

## The Best Decisions Start with the Best Intelligence

Monnit helps you solve challenges and streamline operations using data from the Internet of Things (IoT).

## Actionable Data is the Solution

Running a business requires a lot of decision-making and taking action. Of course, not just any decision or action will do. Your business depends on you making the best decisions at the best times. But you need data to do it right. Actionable data to achieve actionable results.

That's what Monnit gives you with our Remote Monitoring Solutions—easily, quickly, reliably. Monnit Solutions—with our Sensors, Gateways, and Software for virtually any industry application—deliver the data you need to run your organization right. The days of business guessing games are long gone with Monnit.

Monnit IoT Solutions can help you make better-informed decisions and take the right actions to improve your business today.



## Know the Best Places to Install ALTA Wireless Sensors

The ALTA<sup>®</sup> Site Survey Tool tells you precisely where to install ALTA Wireless Sensors to achieve optimal data communication performance. The handheld tool measures the TRUESIGNAL<sup>™</sup> by assessing the wireless signal strength, quality, and background interference wherever you consider placing ALTA Sensors within your Internet of Things (IoT) network.

Before you install your sensors, you use the Site Survey Tool to perform a quick signal test. The tool's LCD reports the average TRUESIGNAL percentage for the area you're assessing along with Pass, Poor, or Fail based on your preferred signal reliability setting.

You can choose a signal reliability setting—Mission-Critical, Strong, or Functional—in the cloud-based iMonnit IoT Monitoring and Sensor Management Software. The tool uses this setting to calculate the TRUESIGNAL according to your environment, background interference, use case, and how frequently and reliably your sensors need to send data.

With the ALTA Site Survey Tool, you can:

- Plan and design your IoT network.
- Predict the signal reliability of possible sensor locations.
- Match data communication needs more precisely to your IoT use case.
- Optimize your IoT network by fine-tuning sensor placement.

The tool helps you configure an ideal IoT network in:

- Environments with expansive open spaces of more than 2,000 feet and fewer obstructions, such as greenhouses, petrochemical plants, agriculture, etc.
- Buildings with extensive concrete, rebar, and square footage, such as high rises, skyscrapers, sports and concert arenas, stadiums, schools, hospitals, churches, etc.
- Warehouses with many obstructions, and shipping container and tractor-trailer yards

The secure, long-range ALTA data communications platform with interference immunity delivers sensor data to ALTA XL<sup>®</sup> gateways more than 2,000 feet away (non-line-of-sight) through 18+ walls and up to one mile (line-of-sight). Using the ALTA Site Survey Tool, you get the precise TRUESIGNAL reliability you can count on for sensors installed at your specific testing locations.

We recommend that your complex installations incorporate the ALTA Site Survey Tool to ensure smooth deployment and the most reliable ALTA RF network. The device may be rented or purchased.



**Battery / Enclosure** AAA

**Part Number** MNO2-x-W2-SS-RT (rental unit)  
MNO2-x-W2-SS-ST (purchase)



**A** **ALTA Wireless Sensors**  
*Monitor Virtually Anything Anywhere*

**B** **ALTA & ALTA XL Gateways**  
*Take Control of Valuable Data*

**C** **PoE-X**  
*Power over Ethernet Insights*

**D** **Next Sensors**  
*More Agility with Wi-Fi*

**E** **Accessories**  
*Enhance Monitoring*

**MONNIT**<sup>®</sup>



## ALTA® Wireless Sensors

<b>Temperature Sensors</b>	<b>1</b>	<b>Wireless Voltage Detection</b>	<b>10</b>
Wireless Standard Temperature Sensor	1	Wireless 200 VDC Voltage Meter	10
Wireless High Temperature Sensor	1	Wireless 500 VAC Voltage Meter	10
Wireless Low Temperature Sensor	1	Wireless 200 VDC Voltage Detection Sensor	11
Wireless Duct Temperature Sensor	2	Wireless 500 VAC Voltage Detection Sensor	11
Wireless Digital Temperature Sensor	2		
<b>Humidity Sensors</b>	<b>2</b>	<b>Water Detection</b>	<b>12</b>
<b>Open / Closed Sensors</b>	<b>3</b>	Wireless Water Rope Sensor	12
<b>Motion and Occupancy Sensors</b>	<b>3</b>	Wireless Water Detect +	12
Wireless PIR Motion Sensor	3	Wireless Water Detection Puck	12
Wireless Motion+ Sensor	3	Wireless Water Detection	13
<b>AC Current Meters</b>	<b>3</b>	<b>Wireless Pulse Counter</b>	<b>13</b>
Wireless 20 Amp AC Current Meter	3	Dual Pulse Counter	13
Wireless 150 Amp AC Current Meter	4	<b>Wireless Pressure Sensors</b>	<b>14</b>
Wireless 500 Amp AC Current Meter	4	Wireless 50 PSIG Pressure Meter	14
<b>Light Meters</b>	<b>4</b>	Wireless 300 PSIG Pressure Meter	14
Wireless LUX Light Meter	4	Wireless 750 PSIG Pressure Meter	14
Wireless PAR Light Meter	4	Wireless 3000 PSIG Pressure Meter	14
<b>Three-Phase Current Meters</b>	<b>5</b>	<b>Wireless Button Press Sensors</b>	<b>15</b>
Wireless 20 Amp Three-Phase Current	5	<b>Wireless Gas Detection Sensors</b>	<b>15</b>
Wireless 150 Amp Three-Phase Current	5	Wireless Carbon Monoxide (CO) Sensor	15
Wireless 500 Amp Three-Phase Current	5	Wireless Carbon Dioxide (CO <sub>2</sub> ) Sensor	15
<b>Interface Meters</b>	<b>6</b>	Wireless Hydrogen Sulfide (H <sub>2</sub> S) Sensor	15
Wireless Dry Contact Sensor	6	<b>Resistance Sensors</b>	<b>16</b>
Wireless 5-Input Dry Contact Sensor	6	<b>Ultrasonic Ranging Sensors</b>	<b>16</b>
Wireless Resistive Bridge Meter	6	Wireless Enterprise Ultrasonic Sensor	16
Wireless 20 mA Interface Current Meter	6	Wireless Industrial Ultrasonic Sensor	16
Wireless 0-5 VDC Interface Volt Meter	7	<b>Air Quality Sensor</b>	<b>17</b>
Wireless 0-10 VDC Interface Volt Meter	7	<b>Air Velocity Sensor</b>	<b>17</b>
<b>Thermocouple Sensors</b>	<b>8</b>	<b>Differential Air Pressure Sensor</b>	<b>18</b>
<b>Accelerometers</b>	<b>8</b>	<b>Vehicle Detection Sensor</b>	<b>18</b>
Wireless Advanced Vibration Meter	8	<b>Propane Tank Level Sensor</b>	<b>18</b>
Wireless Tilt Detection Sensor	8	<b>Soil Moisture Sensor</b>	<b>18</b>
Wireless G-Force Max - Avg Accelerometer	9	<b>ALTA Wireless Sensor Sizes</b>	<b>19</b>
Wireless Tilt Sensor	9		
Wireless Activity Detection Sensor	10		



## Temperature Sensors

### Wireless Standard Temperature Sensor

The ALTA Wireless Temperature Sensors uses an NTC-type thermistor to measure temperature from -40°C to 125°C (-40°F to 257°F). The sensor outputs the ambient temperature in degrees Fahrenheit or Celsius. The sensor is accurate to  $\pm 1^\circ\text{C}$  ( $\pm 1.8^\circ\text{F}$ ). Increased accuracy to  $\pm 0.25^\circ\text{C}$  ( $\pm 0.45^\circ\text{F}$ ) can be accomplished with user calibration.

**Battery / Enclosure**

AA  
Coin Cell  
Industrial

**Part Number**

MNS2-9-W2-TS-ST  
MNS2-9-W1-TS-ST  
MNS2-9-IN-TS-ST

Longer lead lengths are available for this product!



### Wireless High Temperature Sensor

ALTA Wireless High Temperature Sensors use an RTD to accurately measure temperatures from -50°C to +370°C. The solution is perfect for critical, high temperature applications such as ovens, heaters, furnaces, and boilers.

**Battery / Enclosure**

AA  
Industrial

**Part Number**

MNS2-W2-TS-HT-L03  
MNS2-IN-TS-HT-L03

Longer lead lengths are available for this product!



### Wireless Low Temperature Sensor

ALTA Wireless Low Temperature Sensors use an RTD to accurately measure temperatures from -200°C to 0°C. This solution is recommended for medical-grade freezers that cool at temps colder than -40°C, cryogenic applications, as well as standard freezers and refrigerators.

**Battery / Enclosure**

AA  
Industrial

**Part Number**

MNS2-W2-TS-LT-L03  
MNS2-IN-TS-LT-L03

Longer lead lengths are available for this product!



## Wireless Duct Temperature Sensor

Wireless Duct Temperature Sensors in commercial, enterprise, and industrial-grade housings are available for duct monitoring. Each duct temp sensor features a probe temperature range of -40°C to +150°C (-40°F to +302°F) and an NTC-type thermistor with UL-listed plenum cable for superior accuracy.

Battery / Enclosure	Part Number
AA	MNS2-W2-TS-DT-L08
Coin Cell	MNS2-W1-TS-DT-L08
Industrial	MNS2-IN-TS-DT-L08



## Wireless Digital Temperature Sensor

Monnit's ALTA Digital Temperature Sensor has a range of -40°F to +257°F (-40°C to +125°C) to support cold food storage, clinical vaccine storage, research labs, and other health-related fields.

Battery / Enclosure	Part Number
AA	MNS2-W2-TS-SD-L03



## Humidity Sensors

### Wireless Humidity Sensor

ALTA Wireless Humidity Sensors allow you to monitor the relative humidity of the air within a room or enclosure. This solution is ideal for monitoring humidity within greenhouses, industrial spaces, museums, saunas, and humidors. They can also be used for residential applications such as controlling mold, mildew, or dust mites.

Battery / Enclosure	Part Number
AA	MNS2-W2-HU-RH
Coin Cell	MNS2-W1-HU-RH
Industrial	MNS2-IN-HU-RH



## Open / Closed Sensor

### Wireless Open / Closed Sensor

ALTA Wireless Open / Closed Sensors provide information on the status of doors, windows, cabinets, etc. Know if a building or area is accessed when it should not, or if a door or window has been left open.

Battery / Enclosure	Part Number
AA	MNS2-W2-OC-ST
Coin Cell	MNS2-W1-OC-ST
Industrial	MNS2-IN-OC-ST



## Infrared Motion & Occupancy Sensors

### Wireless Infrared Motion Sensor

Detect motion by people or animals in virtually any area or room up to 15 feet and within an 80° angle. The Monnit ALTA Wireless PIR Motion Sensors use passive infrared (PIR) technology to detect heat signatures to augment facility security, protect assets, and optimize building services through usage data. A wide-angle option even tracks a broader view of 110° to give you a good look into what's happening at your facilities.

Battery / Enclosure	Part Number
AA	MNS2-W2-MS-IR
AA (Wide Angle)	MNS2-W2-MS-IR-WA
Coin Cell	MNS2-W1-MS-IR



### Wireless Infrared Motion+ Sensor

Monitor movement, ambient temperature, and relative humidity (RH) with the three-in-one ALTA Wireless Motion+ Sensor. The easy-to-install multi-sensor can alert facility managers about three essential conditions in virtually any environment. Measure motion up to 15 feet and within an 80° angle. Track temperature between -40°F to +257°F (-40°C to +125°C). Monitor up to 100% RH with a scientific-grade element.

Battery / Enclosure	Part Number
AA - BLACK	MNS2-W2-MS-IRH
AA - WHITE	MNS2-W2-MS-IRH-WE



## AC Current Meters

### Wireless 20 Amp AC Current Meter

This low-power 20 Amp AC Current Meter remotely audits power consumption. The electric power draw of servers, vending machines, or workout machines can all be monitored using this current transducer.

Battery / Enclosure	Part Number
AA	MNS2-W2-CM-020
Industrial	MNS2-IN-CM-020



## Wireless 150 Amp AC Current Meter

Remotely monitoring your business with an ALTA 150 Amp AC Current Meter opens up many possibilities. Measure the power consumption of single-phase electrical server systems and current used by low-to medium-power equipment like servers, computers, motors, vending machines, etc. The Industrial version includes a detachable 3-foot lead with an M12 5-pin connector for easy installation.

<b>Battery / Enclosure</b>	<b>Part Number</b>
AA	MNS2-W2-CM-150
Industrial	MNS2-IN-CM-150



## Wireless 500 Amp AC Current Meter

A single-phase, high-power ALTA 500 Amp AC Current Meter is ideal for measuring commercial generator power consumption, heavy-duty industrial equipment, or main breakers in industrial and commercial panels. Easily install the Industrial current transformer (CT) using its detachable M12 5-pin connector to monitor a single wire of an AC system.

<b>Battery / Enclosure</b>	<b>Part Number</b>
AA	MNS2-W2-CM-500
Industrial	MNS2-9-IN-CM-150D



## Light Meters

### Wireless LUX Light Meter

Wireless ALTA LUX Light Meters monitor light intensity from (0-83,000 lux) indoors. The ALTA LUX Light Meter helps protect valuable assets like artifacts, pharmaceuticals, and food ingredients from excessive light exposure and improve security system lighting.

<b>Battery / Enclosure</b>	<b>Part Number</b>
AA	MNS2-W2-LS-LM
Industrial	MNS2-IN-LS-LM



### Wireless PAR Light Meter

The scientific-grade ALTA Wireless Photosynthetically Active Radiation (PAR) Light Meter measures the light spectrum (389 to 692 nanometers) that directly affects plant health and growth. Ideal for agritech operations, the PAR Light Meter helps growers monitor the performance of grow lighting systems to give crop canopies the light needed for photosynthesis.

<b>Battery / Enclosure</b>	<b>Part Number</b>
Industrial	MNS2-IN-LS-PAR



## Three-Phase Current Meters

### Wireless 20 Amp Three-Phase Current Meter

Incorporate this ALTA 20 Amp Three-Phase Current Meter revenue-grade device, into facilities relying on powerful devices and systems, such as machine shops. Remotely monitor power consumption to track motor health or power system faults. Monitor min/max RMS current, duty cycle of each phase, combined amp hours, and other metrics.

**Battery / Enclosure**  
Industrial

**Part Number**  
MNS2-IN-3P-020



### Wireless 150 Amp Three-Phase Current Meters

Remotely monitor your high-power commercial and industrial equipment with an ALTA 150 Amp Three-Phase Current Meter. Measure the power consumption of medium- to heavy-duty three-phase systems like: HVAC and industrial machine motors.

The meter includes a detachable 3-foot lead with an M12 5-pin connector and three clip-on current transformers (CTs) for easier installation.

**Battery / Enclosure**  
Three-Phase Industrial

**Part Number**  
MNS2-9-IN-3P-150D



### Wireless 500 Amp Three-Phase Current Meters

Use this meter and be alerted about load imbalances or power faults. The ALTA 500 Amp Three-Phase Current Meter uses three 0–500 amp current transformers (CTs) to monitor the main power for commercial buildings and heavy-duty industrial systems. Run the detachable leads with CTs through the circuit panel and connect them to the corresponding numbered housing ports for each of the three phases you monitor.

**Battery / Enclosure**  
Three-Phase Industrial

**Part Number**  
MNS2-9-IN-3P-500D



## Interface Meters

### Wireless Dry Contact Sensor

The ALTA Wireless Dry Contact Sensor detects when there is contact between the two wired endpoints. You can easily integrate it into existing switches or contact plates. When the sensor detects contact between the two endpoints, it transmits the data to the wireless gateway and iMonnit Monitoring and Notification System.

**Battery / Enclosure**

AA  
Coin Cell  
Industrial

**Part Number**

MNS2-W2-DC-CF-L01  
MNS2-W1-DC-CF-L01  
MNS2-IN-DC-CF-L01

Longer probe lengths are available for this product!



### Wireless 5-Input Dry Contact Sensor

Monitor up to five or a bank of contact points, mechanical switches or relays, transistor switches, or contact plates simultaneously using five wired inputs and a ground wire. The versatile ALTA Wireless 5-Input Dry Contact Sensor features five independent, highly reactive wired inputs to detect contact between multiple points in one place.

**Battery / Enclosure**

AA  
Industrial

**Part Number**

MNS2-IN-DC-05-L03  
MNS2-W2-DC-05-L03



### Wireless Resistive Bridge Meter

Available in our Enterprise and Industrial versions, the ALTA Resistive Bridge Meter connects to Wheatstone and other analog bridge circuits to measure strain, force, pressure, displacement, incline, and torque. It excites a resistor bridge and measures the voltage across its 3-foot, four-wire lead. A Programmable Gain Amplifier (PGA) can be set between 1X and 128X.

**Battery / Enclosure**

AA  
Industrial

**Part Number**

MNS2-9-W2-RS-BR-L03  
MNS2-9-IN-RS-BR-L03



## Wireless 20 mA Interface Current Meter

Easily update existing scientific or industrial sensors to wirelessly collect process data. Remotely monitor current transducers, as well as oxygen, pH, magnetic flow sensors, and more.

Battery / Enclosure	Part Number
AA	MNS2-W2-MA-020
Coin Cell	MNS2-W1-MA-020
Industrial	MNS2-IN-MA-020



## Wireless 0–5 VDC Interface Volt Meter

Easily monitor potential differences (voltage) between two electrical points. Use turnkey voltage meters to retrofit common industrial sensors, monitor batteries, renewable energy sources, and more.

Battery / Enclosure	Part Number
AA	MNS2-W2-VM-005
Coin Cell	MNS2-W1-VM-005
Industrial	MNS2-IN-VM-005



## Wireless 0–10 VDC Interface Volt Meter

Add turnkey wireless voltage meters to commonly used industrial sensors and remotely monitor the voltage between two points. Get data from previously “dumb” devices to optimize operations.

Battery / Enclosure	Part Number
AA	MNS2-W2-VM-010
Coin Cell	MNS2-W1-VM-010
Industrial	MNS2-IN-VM-010



## Thermocouple

### Wireless Thermocouple Sensor

The ALTA Wireless Thermocouple is available with either a hardwired thermocouple or a K-Type connector (for supporting various thermocouple types and ranges) to measure high temperature applications. The hardwired thermocouple option measures temperatures from -100°C (-148°F) to 400°C (752°F).



#### FIXED PROBE

##### Battery / Enclosure

AA  
Coin Cell  
Industrial

##### Part Number

MNS2-W2-TS-TC-HW  
MNS2-W1-TS-TC-HW  
MNS2-IN-TS-TC-HW

#### K-TYPE CONNECTOR

##### Battery / Enclosure

AA  
Coin Cell  
Industrial

##### Part Number

MNS2-W2-TS-TC-KP  
MNS2-W1-TS-TC-KP  
MNS2-IN-TS-TC-KP

## Accelerometers

### Wireless Advanced Vibration Meter

The Advanced Vibration Meter uses an accelerometer to measure vibration and frequency on three axes. The sensor reports vibration (acceleration, velocity, displacement, or acceleration peak), frequency (Hz/RPM), and crest factor on all three axes. It also reports duty cycle (how much of the report interval that vibration was present), and temperature.

##### Battery / Enclosure

AA  
Industrial

##### Part Number

MNS2-W2-AC-ADV  
MNS2-IN-AC-ADV-L10



### Wireless Tilt Detection Sensor

With a measurement range of 0–180° and accuracy of 0.5°, this sensor instantly reports (in degrees) when movement exceeds preset limits. If a guard arm is breached, the tilt detect sensor sends an alert via a text, email, or call. The device can sense whether it is "Up," "Down," and "Stuck." Any movement between these regions will be recorded.

##### Battery / Enclosure

AA  
Coin Cell  
Industrial

##### Part Number

MNS2-W2-AC-TT  
MNS2-W1-AC-TT  
MNS2-IN-AC-TT



## Wireless G-Force Max-Avg Accelerometer

The G-Force Max/Avg Sensor measures the maximum and average g-force values along X, Y, and Z axes. Custom Delta values allow for the user to set thresholds which, when exceeded, will trigger the sensor to report in immediately. Configurable data rates allow for more samples to be collected for every measurement with higher data rates resulting in faster reaction time. The data reported is useful for tracking periodic motion and event detection.

### Battery / Enclosure

AA  
Industrial

### Part Number

MNS2-W2-AC-GM  
MNS2-IN-AC-GM



## Wireless Tilt Sensor

Better understand your operations, machine health, or structure status by collecting inclination data or tracking pitch and roll with Monnit's ALTA Wireless Tilt Sensors. If a tilt sensor detects a deviation from your preset limits during measurement, an alert is issued via a text, email, or call.

### Battery / Enclosure

AA  
Coin Cell  
Industrial

### Part Number

MNS2-W2-AC-TL  
MNS2-IN-AC-TL  
MNS2-W1-AC-TL



## Wireless Activity Detection Sensor

Find out instantly if machinery, equipment, supplies, or other key assets vibrate or abruptly move too much. The ALTA Wireless Activity Detection Sensor monitors and measures the number of vibrations, frequency, and sudden movement or lack of movement of surfaces and objects.

Battery / Enclosure	Part Number
AA	MNS2-W2-AC-TL
Coin Cell	MNS2-IN-AC-TL
Industrial	MNS2-W1-AC-TL



## Wireless Voltage Detection

### Wireless 200 VDC Voltage Meter

Integrate a Wireless 200 VDC Voltage Meter to monitor the electrical status of items you depend on, like industrial lift trucks, solar PV panels, and power banks. Remotely monitor status and operation.

Battery / Enclosure	Part Number
AA	MNS2-W2-VM-200
Coin Cell	MNS2-W1-VM-200
Industrial	MNS2-IN-VM-200



### Wireless 500 VAC Voltage Meter

Use this Wireless 500 VAC Voltage Meter to track the voltage status of commercial and industrial equipment. Whether it's battery- or line-powered, remotely monitor and always know power status.

Battery / Enclosure	Part Number
AA	MNS2-W2-VM-500
Coin Cell	MNS2-W1-VM-500
Industrial	MNS2-IN-VM-500



## Wireless 200 VDC Voltage Detection Sensor

This Wireless 200 VDC Voltage Sensor monitors the on/off status of equipment, machines, or battery levels. Track power sources up to 200 VDC for industrial vehicles, ATVs, adapters, PV solar equipment, and more.

### Battery / Enclosure

AA  
Coin Cell  
Industrial

### Part Number

MNS2-W2-VD-200  
MNS2-W1-VD-200  
MNS2-IN-VD-200



## Wireless 500 VAC Voltage Detection Sensor

Wirelessly monitor voltage for critical equipment and systems up to 500 VAC. Keep an eye on sprinkler systems, HVAC, power couplings, and sump pumps. Know about electrical faults and act quickly to keep business moving.

### Battery / Enclosure

AA  
Coin Cell  
Industrial

### Part Number

MNS2-W2-VM-500  
MNS2-W1-VM-500  
MNS2-IN-VM-500



## Water Detection Sensors

### Wireless Water Rope Sensor

The ALTA Wireless Water Rope Sensor detects the presence of water anywhere along the surface of the rope. The sensor comes with 10 feet of water rope. Additional 10-ft. sections are available and can be connected up to 100 feet.

**Battery / Enclosure**

AA  
Coin Cell  
Industrial

**Part Number**

MNS2-W2-WS-WR  
MNS2-W1-WS-WR  
MNS2-IN-WS-WR



### Wireless Water Detect Plus Sensor

The Wireless Water Detect Plus Sensor employs a wall- or surface-mountable probe at the end of a 3' lead to detect water's presence or absence. The probe is often used in sanitation or process applications to detect levels in reservoirs or vats of non-combustible liquid.

**Battery / Enclosure**

AA  
Coin Cell  
Industrial

**Part Number**

MNS2-W2-WS-WP-L03  
MNS2-W1-WS-WP-L03  
MNS2-IN-WS-WP-L03



### Wireless Water Detection Puck

Housed in a vulcanized hockey puck, this submersible sensor detects water's presence or non-presence. Drop this sensor nearly anywhere to monitor for leaks / spills, e.g., production, manufacturing, or building maintenance.

**Battery / Enclosure**

AA - Black  
AA - White

**Part Number**

MNS2-PK-WS-PS  
MNS2-PK-WS-PS-WT



## Wireless Water Detection Sensor

These popular sensors detect the presence or non-presence of non-combustible liquids (e.g., water). Deploy in such applications as sump pump monitoring, water heater drip pan monitoring, or between drywall and subflooring.

### Battery / Enclosure

AA  
Coin Cell  
Industrial

### Part Number

MNS2-W2-WS-WD-L03  
MNS2-W1-WS-WD-L03  
MNS2-IN-WS-WD-L03



## Pulse Counters

### Wireless Pulse Counter

The ALTA Wireless Pulse Counter can be connected to the pulse output of a system (water meter, power meter, etc.) to count the number of actuations within a given time frame. The Wireless Pulse Counter is an electronic counter capable of counting passive (open/closed switch) or active (up to +15 VDC) pulses.

### Battery / Enclosure

AA  
Coin Cell  
Industrial

### Part Number

MNS2-W2-PC-01  
MNS2-W1-PC-01  
MNS2-IN-PC-01



### Wireless Dual Pulse Counter

Record two pulse output devices like water, air, gas, or power meters simultaneously with the ALTA Wireless Dual Pulse Counter. You can count active (up to +15 volts of direct current or VDC) or passive (open/closed switch) pulses in a timeframe or an aggregating accumulation. Count a pulse's positive and negative edges and configure four low-pass filter settings in iMonnit.

### Battery / Enclosure

AA  
Industrial

### Part Number

MNS2-W2-PC-02  
MNS2-IN-PC-02



## Pressure Meters

### Wireless 50 PSIG Pressure Meter

The Wireless 50 PSIG Pressure Meter keeps lab managers, field service engineers, and other professionals connected to processes and machinery. If line pressure deviates from user-set thresholds, this pressure sensor instantly alerts the user via a text, email, or call.

Battery / Enclosure	Part Number
AA	MNS2-W2-PS-050
Industrial	MNS2-IN-PS-050



### Wireless 300 PSIG Pressure Meter

Indispensable to facility managers, fabricators, and legacy machine operators, Monnit's 300 PSIG Wireless Pressure Meter remotely monitors line pressures (gas, liquid, or vapors). If pressure exceeds user-defined limits, the user receives an alert via an email, call, or text.

Battery / Enclosure	Part Number
AA	MNS2-W2-PS-300
Industrial	MNS2-IN-PS-300



### Wireless 750 PSIG Pressure Meter

Measure gas, liquid, and vapor pipeline pressure up to 750 PSIG in utilities, refineries, labs, machine shops, water management, manufacturing, HVAC, and many others. The ALTA 750 PSIG Pressure Meter uses a 5-volt transducer to assess pressure based on your preset parameters in the cloud-based iMonnit Sensor Management and Monitoring Software.

Battery / Enclosure	Part Number
AA	MNS2-W2-PS-750
Industrial	MNS2-IN-PS-750



### Wireless 3000 PSIG Pressure Meter

Like all ALTA PSIG Pressure Meters, the 3000 PSIG Pressure Meter monitors gas, liquid, and vapor supply lines in many settings or industry applications. This pressure meter can handle high-pressure lines of many types, be it in water management systems, petrochemical processing plants, health care facilities, manufacturing processes, or commercial HVAC/R systems.

Battery / Enclosure	Part Number
AA	MNS2-W2-PS-3000
Industrial	MNS2-IN-PS-3000



## Button Press Sensors

### Wireless Button Press Sensor

Need help providing swift customer service or deploying a large-scale sensor network? Instant alerts from the Monnit Wireless Button Press Sensor support you by streamlining sensor deployment and expediting customer service requests.

Battery / Enclosure	Part Number
AA	MNS2-9-W2-PB-ST
Coin Cell	MNS2-9-W1-PB-ST



## Gas Detection Sensors

### Wireless Carbon Monoxide (CO) Sensor

This unique battery-powered sensor monitors job sites, offices, and residential complexes for carbon monoxide (CO). Within a small footprint, the MEMS-based device packs a 0–1,000 PPM measurement range and automated data logging.

Battery / Enclosure	Part Number
AA	MNS2-W2-GS-C1



### Wireless Carbon Dioxide (CO<sub>2</sub>) Sensor

Trusted by facility managers, this MEMS-based sensor monitors CO<sub>2</sub> levels in the air. Get an alert if CO<sub>2</sub> levels surpass preset limits. It's used to protect indoor air quality in greenhouses, marine vessels, and HVAC systems.

Battery / Enclosure	Part Number
AA	MNS2-W2-GS-C2



### Wireless Hydrogen Sulfide (H<sub>2</sub>S) Gas Sensor

This safety sensor tracks the presence of H<sub>2</sub>S gas, which is toxic and flammable. Use to safeguard workers in oil / gas production, wastewater treatment, utilities, and other hazardous areas.

Battery / Enclosure	Part Number
AA	MNS2-W2-GS-H2S



## Resistance Sensors

### Wireless Resistance Sensor

These sensors read the resistance across a resistive load up to 250K Ohms and are meant to connect to passive devices only.

**Battery / Enclosure**

AA  
Coin Cell  
Industrial

**Part Number**

MNS2-W2-RS-ST-L03  
MNS2-W1-RS-ST-L03  
MNS2-IN-RS-ST-L03



## Ultrasonic Ranging Sensors

### Wireless Enterprise Ultrasonic Ranging Sensor

This enterprise-grade remote monitoring solution measures the distance between itself and objects in its path. Use for liquid-level detection, inventory status, object detection and other indoor or outdoor applications.

**Battery / Enclosure**

AA

**Part Number**

MNS2-W2-US-ST



### Wireless Industrial Ultrasonic Ranging Sensor

Packaged in a weatherproof housing, Monnit's ALTA Industrial Ultrasonic Ranging Sensor measures tank or container levels and detects objects. The sensor features a mountable and detachable 3-foot lead with an M12 5-pin connector and horn around a transducer disc to direct its pulsing echoes precisely. Easily mount the horn to a tank, container, wall, or panel with the adjustable bulkhead adapter fitting.

**Battery / Enclosure**

Industrial

**Part Number**

MNS2-IN-US-IN-MPL-PA



## Air Quality Sensor

### Wireless Air Quality Sensor

This mount-and-monitor device measures particulate matter that's coarse (PM10), fine (PM2.5), and ultra-fine (PM1) inside mines, production facilities, commercial kitchens and facilities, as well as business buildings. This unit is powered by line-power and has a battery backup.

**Battery / Enclosure**  
AA

**Part Number**  
MNS2-W2-AQ-P25A-LPO



## Air Velocity Sensor

### Wireless Air Velocity Sensor

The Air Velocity Sensor measures the pressure difference between two input ports, as well as ambient temperature and altitude to determine airflow speed in a system. Use in sensitive areas, e.g., hospitals and clean rooms.

**Battery / Enclosure**  
AA  
Industrial

**Part Number**  
MNS2-W2-PS-AV-LPO  
MNS2-IN-PS-AV



## Differential Air Pressure Sensors

### Wireless Differential Air Pressure Sensor

This sensor measures the pressure difference between its two ports. Ideal for food service, healthcare, and academia. Common applications include clean rooms, pharmaceutical production, commercial kitchens, and HVAC or applications where negative air pressure monitoring is required.

**Battery / Enclosure**  
AA  
Industrial

**Part Number**  
MNS2-W2-PS-DP-LPO  
MNS2-IN-PS-DP



## Vehicle Detection Sensor

### Wireless Vehicle Detect / Counter Sensor

This easy-to-deploy sensor detects vehicle presence, counts traffic, and tracks the time a vehicle is parked. Ideal for fleet management, parking garages, service centers, curbside retail, and more.

**Battery / Enclosure**  
Industrial

**Part Number**  
MNS2-IN-VS-TT



## Propane Tank Monitoring

### Wireless Propane Tank Level Sensor

Remotely monitor propane levels from anywhere via a smartphone or PC. This turnkey propane sensor works with Sr & Jr R3D® Remote Ready gauges. Prevent unnecessary in-the-field trips and maintain customer satisfaction.

**Battery / Enclosure**  
Industrial

**Part Number**  
MNS2-IN-HE-MG



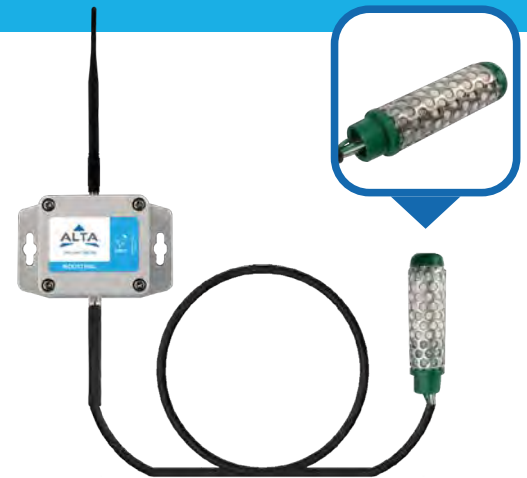
## Soil Moisture Monitoring

### Soil Moisture Sensor

Get critical insights from your soil about how well you water with the ALTA Wireless Soil Moisture Sensor. It's perfect for measuring soil water tension (within a range of 0 to 240 centibar (cb) or kilopascal (kPa)) and temperature (-40°C to 125°C (-40°F to 257°F)). Improving irrigation scheduling and water conservation is easier because you'll know when and where to water your crops more precisely.

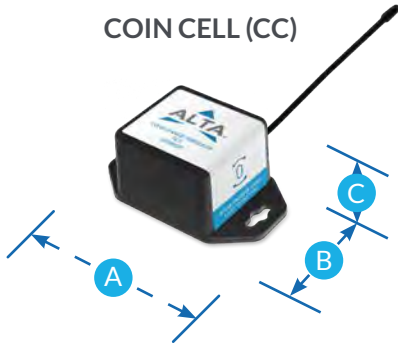
**Battery / Enclosure**  
Industrial

**Part Number**  
MNS2-IN-WS-WM-L05



# Monnit ALTA Sensor Sizes

COIN CELL (CC)

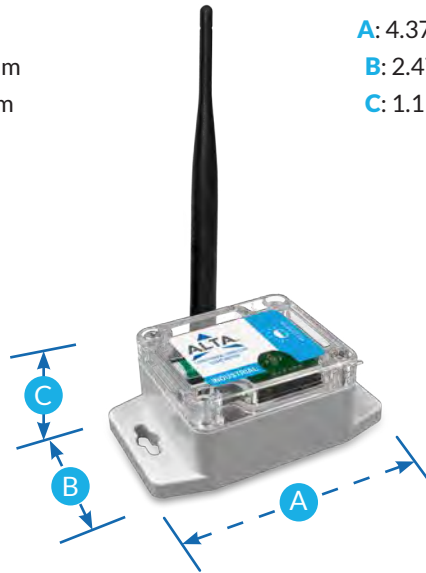


- A: 2.0 inches / 50.8 mm
- B: 1.125 inches / 28.57 mm
- C: .875 inches / 22.22 mm

DOUBLE AA (AA)



- A: 4.375 inches / 111.12 mm
- B: 2.470 inches / 62.73 mm
- C: 1.111 inches / 28.21 mm



INDUSTRIAL (IN)

- A: 3.701 inches / 94.00 mm
- B: 2.316 inches / 58.82 mm
- C: 1.378 inches / 35 mm

Dimensions for standard housing sizes.  
For sensors in non-typical housings, please refer to their data sheets.

## MONNIT®

Monnit Corporation

3400 South West Temple • Salt Lake City, UT 84115 • 801-561-5555  
www.monnit.com





## ALTA® Gateways

### ALTA XL Gateways

IoT Gateway	1
Industrial IoT Gateway	1
Ethernet Gateway	1

### ALTA Cellular IoT Gateways

Industrial IoT Gateway	2
IoT Gateway	2

### International Gateways

2G International Gateway	3
--------------------------	---

### Ethernet Gateway

ALTA Ethernet Gateway	3
-----------------------	---

### Modbus

Serial Modbus Gateway	4
-----------------------	---

### Sensor Adapter

Wireless Sensor Adapter	4
-------------------------	---

### ALTA Gateway Sizes

5



For more information about our products or to place an order, please contact our sales department at [info@monnit.com](mailto:info@monnit.com) or 801-561-5555. Visit us on the web at [www.monnit.com](http://www.monnit.com).





## ALTA XL® Gateways

### Send Sensor Data to Greater Distances

The ALTA XL® IoT and Ethernet Gateways feature a powerful wireless transceiver with up to 1 Watt transmission strength and an amplified receiver. This IoT technology allows the gateways to send and receive data communications with ALTA Sensors 2,000+ feet through 18+ walls in commercial, rugged, and remote environments.

The ALTA XL Gateways represent the next evolution of the proprietary long-range wireless ALTA Radio in ALTA Gateways and Sensors that send and receive data 1,200+ feet through 12+ walls. Now you can have the versatile capabilities and connectivity of our ALTA Gateways with the extended wireless range of the ALTA XL IoT and Ethernet Gateways.





## Connect to Advanced Cellular Technology with the ALTA IoT Gateway

With cellular network technology continually evolving, Monnit ensures your Internet of Things (IoT) network keeps up and is also ready for the future. The ALTA<sup>®</sup> IoT Gateway showcases a 4G LTE CAT-M1/NB2 cellular engine in its industrial and commercial versions.

With this cellular platform, the ALTA IoT Gateway ensures your ALTA Wireless Sensors stay connected to the Internet in remote locations where cellular network connectivity is available.

In addition to its cellular connectivity, the ALTA IoT Gateway's key features include:

- *Works in tandem with iMonnit cloud-based software to connect and configure ALTA Wireless Sensors and protect, aggregate, and communicate data, so it's available on-demand anytime, anywhere on a mobile device.*
- *Features an Ethernet platform (commercial only) with an RJ-45 10/100BASE-TX Ethernet jack that provides local device configuration, diagnostics, and connectivity backup.*
- *Delivers the latest ALTA security encryption, long-range transmission, and radio frequency interference immunity for up to one mile (line-of-sight), and up to 1,200+ feet through 12+ walls (non-line-of-sight).*
- *Provides 60-hour battery backup in the event of a power outage.*
- *Stores up to 32,000 sensor messages in its memory if Internet connectivity is lost. Then it sends the saved data to iMonnit once cellular service is restored.*
- *Offers GPS data tracking capability as an add-on service.*
- *Integrates easily into IoT applications or use cases with a wireless Internet connection or where IT infrastructure is dedicated to other resources.*



## ALTA XL Gateways

### ALTA XL® IoT Gateway

The ALTA XL® Enterprise Wireless IoT Gateway features a powerful wireless transceiver with up to 1 Watt transmission strength, an amplified receiver, and 4G LTE CAT-M1/NB2 cellular technology to backhaul ALTA Wireless Sensor data. Like its ALTA counterpart, the gateway also aggregates sensor data. It communicates with the cloud-based iMonnit monitoring software via cellular transmission, making it ideal for remote locations or unavailable Internet. It has GPS data tracking capability as an add-on service, provides up to 60 hours of battery backup, and sends notifications via text, email, or call if preset conditions are met or exceeded. Its RJ-45 Ethernet jack allows for local device configuration and diagnostics and supports connectivity backup.

#### Part Number

MNG3-CME-CCE-ND  
MNG3-CME-CCE-2Y



### ALTA XL® Industrial IoT Gateway

The ALTA XL® Industrial Wireless IoT Gateway touts ruggedized, long-range wireless technology on a 4G LTE CAT-M1/NB2 cellular platform. It also features a powerful wireless transceiver with up to 1 Watt transmission strength and an amplified receiver. Manufacturing and other remote industrial environments can use the gateway to keep an ALTA Wireless Sensor network connected where cellular network connectivity is available and wired connections may be complex. The Industrial IoT Gateway provides the latest ALTA data security encryption and radio frequency interference immunity. It features GPS hardware for location awareness data as an additional service, magnetic power and utility switches, up to 60 hours of battery backup, and stores up to 32,000 sensor messages.

#### Part Number

MNG3-CME-IN-ND  
MNG3-CME-IN-2Y



### ALTA XL® Ethernet Gateway

The ALTA XL® Ethernet Gateway features a powerful wireless transceiver with up to 1 Watt of transmission power and an amplified receiver. The gateway allows ALTA Sensors to communicate with iMonnit® IoT Monitoring and Notification System without needing a PC. Simply provide power and plug the gateway into an open Ethernet port with an Internet connection. It will automatically connect with our online servers, providing the perfect solution for Internet-enabled commercial locations.

The ALTA XL Ethernet Gateway is an advanced gateway that enables fast, reliable IoT data solutions. It's specifically designed to respond to the increasing market need for global technology that accommodates various vertical IoT application segments and remote wireless sensor management solutions.

#### Part Number

MNG3-EGW-CCE



## Cellular IoT Gateways

### ALTA Industrial IoT Gateway

The ALTA® Industrial Wireless IoT Gateway touts rugged, long-range wireless technology running on a 4G LTE CAT-M1/NB2 cellular platform. Manufacturing and other remote industrial environments can use the ALTA Industrial IoT Gateway to keep an ALTA Wireless Sensor network connected where cellular network connectivity is available and wired connections may be complex.

The Industrial IoT Gateway provides ALTA data security encryption and radio frequency interference immunity. It also features GPS hardware for location awareness data as an additional service, up to 60 hours of battery backup, and stores up to 32,000 sensor messages.

**Part Number**  
MNG2-CME-IN



### ALTA IoT Gateway

The ALTA® Commercial Wireless IoT Gateway runs a 4G LTE CAT-M1/NB2 wireless engine and integrates Monnit's wireless access point network to connect ALTA Wireless Sensors to leading cellular networks. It's RJ-45 Ethernet jack allows for local device configuration and diagnostics and supports connectivity backup.

The ALTA IoT Gateway aggregates sensor data and communicates with the cloud-based iMonnit® monitoring software via cellular transmission, making it ideal for remote locations or where the Internet isn't available. It comes with GPS data tracking capability as an add-on service, provides up to 60 hours of battery backup, and stores up to 32,000 sensor messages. The IoT Gateway aggregates sensor data and sends notifications via text, email, or call if preset conditions are met or exceeded.

**Part Number**  
MNG2-CME-CCE



## International Gateways

### International 2G Gateway

The Monnit ALTA® International 3G Cellular Gateway (868MHz for use in Europe, Middle East, Africa and 433MHz for Asia Pacific except Japan and Korea), is based on a 3G (UMTS/GSM) wireless engine and comes integrated with Monnit's wireless access point network for use with all Monnit Wireless Sensors. These gateways allow the sensors to operate on the world's leading cellular networks.

Monnit Cellular Gateways communicate with the iMonnit® (cloud or on-premises) monitoring software via cellular transmission, making them ideal for remote locations or where the Internet is not available. The system aggregates sensor information and sends notifications via text, email, or call if user-defined conditions are met or exceeded.

#### Part Number

MNG2-8-3C3I-SC (EMEA)

MNG2-4-3C3I-SC (APAC)



## Ethernet Gateways

### ALTA Ethernet Gateway

Monnit's ALTA® Ethernet Gateway allows your Monnit ALTA® Wireless Sensors to communicate with the iMonnit™ Online Wireless Sensor Monitoring and Notification System without the need for a PC. Simply provide power and plug the gateway into an open Ethernet network port with an Internet connection.

It will then automatically connect with our online servers, providing the perfect solution for commercial locations where there is an active Internet connection.

The Power-Over-Ethernet option features modified gateway hardware allowing it to be powered through the Ethernet port. (Does not include PoE Power Injector.) Interfaces supported: Modbus, TCP/IP, and SNMP.

#### Part Number

MNG2-EGW-CCE



## Modbus

### Serial Modbus Gateway

The ALTA Serial MODBUS Gateway (SMG) acts as a data concentrator for Monnit's ALTA long-range wireless sensor networks. This device allows you to connect up to 50 wireless sensing devices, per gateway, to your PLC or similar RS232/485 device.

Monnit has recognized the importance of using open standards like Modbus, allowing ALTA Wireless Sensors to be used in the majority of industrial applications.

Modbus is often used to connect a supervisory computer with a remote terminal unit (RTU) in supervisory control and data acquisition (SCADA) systems.

**Part Number**  
MNG2-SG-SMG



## Sensor Adapter

### Wireless Sensor Adapter

The ALTA Wireless Sensor Adapter enables ALTA Wireless Sensors to communicate with your local or online wireless sensor monitoring system by connecting to a PC or third-party IoT gateways via USB connection.

#### Plug into a PC

If an on-site PC has an active Internet connection, it's simple to connect with iMonnit Sensor Configuration and Management Software online and install the free Monnit Gateway application. This combination allows you to pass sensor data to the online system.

The ALTA Wireless Sensor Adapter is specifically designed to respond to the increasing market need for global technology that accommodates several vertical M2M application segments and remote wireless sensor management solutions.

**Part Number**  
MNG2-WSA-USB



# ALTA Gateway Sizes



## SENSOR ADAPTER

- A: 3.5 inches / 88.9 mm
- B: 2.545 inches / 64.64 mm
- C: 1.007 inches / 25.57 mm

## COMMERCIAL



- A: 3.8 inches / 96.52 mm
- B: 5.004 inches / 127.10 mm
- C: .151 inches / 38.35 mm

## INDUSTRIAL



- A: 5.7 inches / 144.78 mm
- B: 3.54 inches / 89.91 mm
- C: 2.14 inches / 54.35 mm

Dimensions for standard housing sizes.  
For gateways in non-typical housings, please refer to their data sheets.

# MONNIT®

Monnit Corporation

3400 South West Temple • Salt Lake City, UT 84115 • 801-561-5555

[www.monnit.com](http://www.monnit.com)





## PoE·X Sensors

PoE·X Sensors plug into a building's Power Over Ethernet (PoE) infrastructure and remotely monitor critical systems and/or infrastructure for hazards, such as water leaks. This data provides smart building operators with tremendous data to economize operation by conserving resources while enhancing comfort. If a monitored variable exceeds specified thresholds, a user is alerted via text, email, or call.

Monnit's PoE·X Sensors use the same PoE cable to both receive power and transmit data. This two-in-one capability maximizes space utilization and addresses needs for a broad layout and high-density sensor networks, such as those needed for server rooms and data centers.

## PoE·X

<b>PoE·X Temperature Sensors</b>	<b>1</b>	<b>PoE·X Water Rope Sensor</b>	<b>3</b>
PoE·X Standard Temperature Sensor	1	<b>PoE·X Dry Contact Sensor</b>	3
PoE·X High Temperature Sensor	1	<b>PoE·X Open / Close Sensor</b>	4
PoE·X Low Temperature Sensor	1	<b>PoE·X Motion Detection Sensor</b>	4
<b>PoE·X Duct Temperature Sensor</b>	<b>2</b>	<b>Optional PoE·X Power Adapters</b>	<b>4</b>
<b>PoE·X Thermocouple Sensor</b>	<b>2</b>		
<b>PoE·X Humidity Sensor</b>	<b>2</b>	<b>PoE·X Sensor Sizes</b>	<b>5</b>
<b>PoE·X Water Detect Sensor</b>	<b>3</b>		

For more information about our products or to place an order, please contact our sales department at [info@monnit.com](mailto:info@monnit.com) or 801-561-5555. Visit us on the web at [www.monnit.com](http://www.monnit.com).



## PoE·X Temperature Sensors

### PoE·X Standard Temperature Sensor

Plug the PoE·X Standard Temperature Sensor into your facility's Power over Ethernet (PoE) network to accurately measure temperatures from -40°C to +125°C (-40°F to +257°F). With a precision thermistor, it's accurate to  $\pm 1^\circ\text{C}$  ( $\pm 1.8^\circ\text{F}$ ) or  $\pm 0.25^\circ\text{C}$  ( $\pm 0.45^\circ\text{F}$ ) with your calibration.

#### Battery / Enclosure

PoE-powered; Line power optional

#### Part Number

MNS-P-C1-TS-ST-L03



### PoE·X High Temperature Sensor

Remotely monitor temperatures from -50°C (-58°F) up to +370°C (700°F) with the PoE·X High Temperature Sensor. It uses a glass-coated platinum resistance temperature detector (RTD) transducer and alerts you via text, email, or call when a preset temperature threshold is crossed.

#### Battery / Enclosure

PoE-powered; Line power optional

#### Part Number

MNS-P-C1-TS-HT-L03



### PoE·X Low Temperature Sensor

Use the same Power over Ethernet (PoE) cable to power the PoE·X Low Temperature Sensor and transmit its data. The sensor can help you monitor ultralow freezer temperatures and other freezing environments within temperatures from -200°C to 0°C/-328°F to 32°F at  $\pm 0.5^\circ\text{C}$  calibrated accuracy.

#### Battery / Enclosure

PoE-powered; Line power optional

#### Part Number

MNS-P-C1-TS-LT-L03



## PoE·X Duct Temperature Sensor

### PoE·X Duct Temperature Sensor

Remotely monitor internal HVAC system temperature with the PoE·X Duct Temperature Sensor while maintaining a sealed environment. These sensors use a negative temperature coefficient (NTC)-type thermistor with a UL-listed plenum cable to measure temperatures from -40°C to 150°C/-40°F to 302°F.

#### Battery / Enclosure

PoE-powered; Line power optional

#### Part Number

MNS-P-C1-TS-DT-L08



## PoE·X Thermocouple Sensor

### PoE·X Thermocouple Sensor

The PoE·X Thermocouple Sensor has a hardwired connector to measure high-temperature applications from -100°C (-148°F) to 400°C (752°F). It's ideal for monitoring temperatures for commercial ovens, industrial production processes, electric power generation, furnace performance, and more.

#### Battery / Enclosure

PoE-powered; Line power optional

#### Part Number

MNS-P-C1-TS-TC-HW



## PoE·X Humidity Sensor

### PoE·X Humidity Sensor

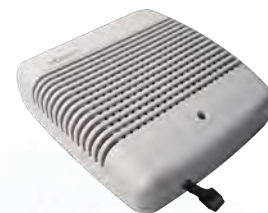
Monitor air moisture percentage and the temperature in any room or environment with the PoE·X Humidity Sensor. It measures the relative humidity (RH) with a +/- 3% accuracy (between 10-90% RH), temperature, and dew point in facilities like greenhouses, grow houses, and museums.

#### Battery / Enclosure

PoE-powered; Line power optional

#### Part Number

MNS-P-C1-HU-RH



## PoE·X Water Detect Sensor

### PoE·X Water Detect Plus Sensor

The PoE·X Water Detect Plus Sensor monitors the presence or non-presence of non-combustible liquids, mainly water, with a 3-foot probe-capped leaded wire in areas that may be prone to pooling or flooding from weather and plumbing leaks. The probe's electrical circuit minimizes false alarms.

**Battery / Enclosure**

PoE-powered; Line power optional

**Part Number**

MNS-P-C1-WS-WP-L03



## PoE·X Water Rope Sensor

### PoE·X Water Rope Sensor

Run the PoE·X Water Rope Sensor's conductive polymer rope along foundations, walkways, walls, pipes, and other water or liquid-prone areas. The sensor detects water intrusion, plumbing leaks, or pooling water via its 10-foot rope. You can add 10-foot extensions for up to 100-feet of detection.

**Battery / Enclosure**

PoE-powered; Line power optional

**Part Number**

MNS-P-C1-WS-WR



## PoE·X Dry Contact Sensor

### PoE·X Dry Contact Sensor

Within 15 minutes, the sensor can be mounted and wired to two endpoints (such as existing switches or contact plates). Be alerted via email, text, or call if a contact is broken (indicating that the points are no longer touching) or if the two points make contact when they shouldn't be.

**Battery / Enclosure**

PoE-powered; Line power optional

**Part Number**

MNS-P-C1-OC-ST



## PoE•X Open / Closed Sensor

### PoE•X Open / Closed Sensor

Ensure doors, windows, and lids are closed, and people follow lockup procedures with the PoE•X Open-Closed Sensor. Configure a switch and trigger magnet to report if a door is open or closed. It senses if a cooler or freezer door has been open for excessive time or a window opened after hours.

**Battery / Enclosure**

PoE-powered; Line power optional

**Part Number**

MNS-P-C1-OC-ST



## PoE•X Motion Detect Sensor

### PoE•X Motion Detection Sensor

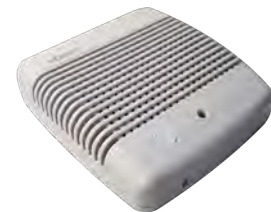
The PoE•X Motion Detection Sensor senses motion and movement using a passive infrared (PIR) element. You can be alerted to temperature changes by people or animals moving through the viewing area of up to 15 feet and 80 degrees. Increase security, coordinate occupancy, and protect assets.

**Battery / Enclosure**

PoE-powered; Line power optional

**Part Number**

MNS-P-C1-MS-IR



## PoE•X Power Adapters

### Optional PoE•X Power Adapters

**Part Number**

MNS-P-C1-MS-IR



## Monnit PoE-X Sensor Size



**A:** 3.917 inches / 99.50 mm

**B:** 4.133 inches / 105.00 mm

**C:** 1.340 inches / 34.05 mm

**MONNIT**<sup>®</sup>

Monnit Corporation

3400 South West Temple • Salt Lake City, UT 84115 • 801-561-5555

[www.monnit.com](http://www.monnit.com)



# Section D: Next



## Wi-Fi Sensors



Combine the simplicity of Wi-Fi connectivity with the power of the Internet of Things (IoT).

In 15 minutes or less, you can connect Monnit Next™ Wi-Fi Sensors to your Wi-Fi network. Just download and install an easy-to-use Next Setup App and you're ready to set up MoWi Sensors.

Then, you'll be running an IoT network of Wi-Fi sensors measuring everything from temperature to motion to water.

Place these sensors virtually anywhere there's Wi-Fi connectivity in your offices, lab, factory, warehouse, store, and more locations to get data logging and instant alerts. Your Next Sensor data is easily accessible through our iMonnit online software on a desktop PC, laptop, or mobile device.

<b>Next Temperature Sensors</b>	<b>1</b>
Next Temperature Sensor	1
Next Low Temperature Sensor	1
<b>Next Dry Contact Sensor</b>	<b>1</b>
<b>Next Open / Close Sensor</b>	<b>2</b>
<b>Next Humidity Sensor</b>	<b>2</b>
<b>Next Water Detect Sensors</b>	<b>2</b>
Next Water Detect Sensor	2
Next Water Detect Plus Sensor	3

<b>Next Motion Sensor</b>	<b>3</b>
<b>Next Sensor Sizes</b>	<b>4</b>

For more information about our products or to place an order, please contact our sales department at [info@monnit.com](mailto:info@monnit.com) or 801-561-5555. Visit us on the web at [www.monnit.com](http://www.monnit.com).



## Next Standard Temperature Sensor

Connect the Next Temperature Sensor to your facility's Wi-Fi network to accurately measure temperatures in a variety of areas, use cases, or assets from  $-40^{\circ}\text{C}$  to  $+125^{\circ}\text{C}$  ( $-40^{\circ}\text{F}$  to  $+257^{\circ}\text{F}$ ). With a precision thermistor, it's accurate to  $\pm 1^{\circ}\text{C}$  ( $\pm 1.8^{\circ}\text{F}$ ) or  $\pm 0.5^{\circ}\text{C}$  ( $\pm 0.9^{\circ}\text{F}$ ) with your calibration.

### Battery / Enclosure

Two replaceable 1.5V AA batteries (included)

### Part Number

MNS-2-NXT-TS-ST



## Next Low Temperature Sensor

Monitor ultralow temperature (ULT) freezers and other things in your cold chain with the Next Low Temperature Sensor that measures temperatures from  $325^{\circ}\text{F}$  to  $32^{\circ}\text{F}$  ( $-200^{\circ}\text{C}$  to  $0^{\circ}\text{C}$ ). It uses a glass-coated platinum resistance temperature detector (RTD) encapsulated in a waterproof probe to accurately measure temperature.

### Battery / Enclosure

Two replaceable 1.5V AA batteries (included)

### Part Number

MNS-2-NXT-TS-LT-L03



## Next Dry Contact Sensor

Detect when there is contact between the sensor's two wired endpoints. Know when equipment is used or if a door or gate is open. Integrate it with a contact plate, button, or mechanical switch. The sensor can be configured to detect both closed and open loops, alerting if contact is made or broken and on state changes.

### Battery / Enclosure

Two replaceable 1.5V AA batteries (included)

### Part Number

MNS-2-NXT-DC-CF-L01



## Next Open-Closed Sensor

Mount the Next Open-Closed Sensor with a switch and trigger magnet on important doors, windows, gates, cabinets, and lids. Configure alerts to report if they're open or closed or opened after hours. For example, the sensor will tell you if a walk-in cooler or freezer door has been open for an excessive time.

### Battery / Enclosure

Two replaceable 1.5V AA batteries (included)

### Part Number

MNS-2-NXT-OC-ST



## Next Humidity Sensor

Remotely monitor relative humidity (RH) with a +/-3% RH accuracy between 80-100% RH. It comes in leaded and non-leaded options and uses a high-accuracy, silicon-based, and factory-calibrated digital element tor transducer to produce % RH and temperature data.

### Battery / Enclosure

Two replaceable 1.5V AA batteries (included)

### Part Number

MNS-2-NXT-HU-RH-L03



## Next Water Detect Sensor

If water pools, floods, or runs out where it shouldn't, the sensor will alert you via text, email, or call 24/7. Monitor water leaks and levels from water heaters, plumbing, reservoirs, and more. It uses a lead with two wired ends to detect when water is present, absent, or for state changes.

### Battery / Enclosure

Two replaceable 1.5V AA batteries (included)

### Part Number

MNS-2-NXT-WS-WD-L03



## Next Water Detect Plus Sensor

Use a stainless steel probe to detect when water is present by completing a circuit between the two contacts at the end of the lead. Get a mobile alert via text, email, or call when water is present, absent, or for a state change. Monitor water leaks and levels from water heaters, plumbing, reservoirs, and more.

### Battery / Enclosure

Two replaceable 1.5V AA batteries (included)

### Part Number

MNS-2-NXT-WS-WP-L03



## Next PIR Motion Sensor

Detect motion and track occupancy to monitor room or area access, optimize HVAC use, and improve cleaning schedules. The sensor uses a passive infrared (PIR) motion-sensing element. The sensor detects relative changes in temperature caused by warm bodies moving through the viewing area.

### Battery / Enclosure

Two replaceable 1.5V AA batteries (included)

### Part Number

MNS-2-NXT-MS-IR



## Monnit Next Sensor Size



- A:** 2.67 inches / 67.8 mm
- B:** 1.67 inches / 42.4 mm
- C:** 1.125 inches / 28.5 mm

**MONNIT**<sup>®</sup>

Monnit Corporation

3400 South West Temple • Salt Lake City, UT 84115 • 801-561-5555  
www.monnit.com



# Section E: Accessories



## Accessories

Monnit Accessories help ensure seamless versatility and connectivity to empower your monitoring needs. Our array of accessories will enhance your experience across various industry applications. From the precision of the ALTA Site Survey Tool to the flexibility of our facility accessories, we give you the tools and backup to build a robust and reliable IoT monitoring system.



Whether you need extra Power Adapters, Temperature Buffers, Replacement Sensor Batteries, and Probes, our many durable accessories will cater to your diverse monitoring needs. Optimize a small-scale monitoring operation or implement a large-scale enterprise solution. Our range of accessories has you covered.

## Accessories

Standard and Multistage Thermostat	1
Site Survey Tool	1
Configuration Tools	2
Gateway Accessories	2
PoE Splitter and Power Adapters	3
Temperature Buffers	3
Water Detection Sensor Accessories	3

Replacement Sensor Probes	4
Replacement Sensor Batteries	4
Open / Close Sensor Replacement Magnets	4
Partner Application Fee	5
High Gain Antennas	5

For more information about our products or to place an order, please contact our sales department at [info@monnit.com](mailto:info@monnit.com) or 801-561-5555. Visit us on the web at [www.monnit.com](http://www.monnit.com).



## Wireless Thermostat

The Monnit ALTA® Standard Smart Thermostat is different than typical thermostats found today, as it is designed specifically for remote configuration. There are no manual adjustment buttons which prevents the cooling or heating system from being tampered with or left in an energy wasting state.

It also features an integrated motion sensor to auto detect if the area is occupied or not. The system allows you to set a max and min temperature range for both occupied and non-occupied states. This is a perfect solution for remote buildings that are typically unoccupied, as the system will auto adjust comfort levels when personnel arrive and automatically return to normal when they leave.

**Part Number**  
MNO2-9-TH-ST



## Wireless MultiStage Thermostat

Control conventional, heat pump, and dual fuel HVAC systems with the ALTA® Wireless MultiStage Thermostat. You can monitor and control up to three heating and two cooling stages. Like our standard wireless thermostat, this one includes a motion sensor to auto-detect whether or not a room is occupied. It also prevents changes with a lockout jumper.

**Part Number**  
MNO2-9-TH-MS



## Site Survey Tool

The ALTA Site Survey Tool tells you the ALTA Sensors' radio signal performance before you install them. Using the tool, you can know the places in your facility or your site where the signal is optimal for your Internet of Things (IoT) network.

The ALTA IoT data communications platform offers delivery and reception reliability up to and, in some places, up to 2,000+ feet through 18+ walls. When you perform a signal reliability test in any area with the ALTA Site Survey Tool, you see the precise TRUESIGNAL™ reliability percentage shown on its LCD along with an indication of Pass, Poor, or Fail.

TRUESIGNAL is an average measurement of ALTA signal strength while accounting for environmental interference like electrical work, cement and rebar, machines, and other wireless devices. Configure your preferred signal reliability settings in iMonnit—Mission-Critical, Strong, or Functional—depending upon the sensing environment, your use case, and how frequently you need sensor data.

**Battery / Enclosure**  
Two replaceable 1.5V AA batteries (included)

**Part Number**  
MNO2-x-W2-SS-RT (rental unit)  
MNO2-x-W2-SS-ST (purchase)



## Configuration Tools

Monnit's sensor configuration accessories assist with setting up MoWi Wi-Fi Sensors and ALTA® gateways. Beyond being customized to Monnit's Remote Monitoring Solutions, the tools are compact, making them ideal for in-the-field sensor commissioning, sensor testing, and incorporating additional sensors into an existing network.

**Wi-Fi Programming Cable**—The cable enables users to configure sensors and security via laptop or PC.

**USB Programmer**—Features several aids, such as converters and a Configuration Utility, for gateway configuration.

Select the right Monnit accessory to program your remote monitoring solution and maximize its performance.

### Part Number

Programming Cable: CBL-0014-06

USB Programmer: CBL-0014-04



## Gateway Accessories

Monnit offers an ALTA Gateway Unlock and ALTA IoT Gateway GPS Unlock, allowing you to tailor gateways to your installation environments, operational preferences, and data requirements.

### ALTA Gateway Unlock

This option frees you to route data from Monnit ALTA Wireless Sensors to their custom host or IP address. Then, you can pair your ALTA Sensors with iMonnit Express or Monnit Mine Software for use with a proprietary backend system.

### ALTA Gateway GPS Unlock

Get access to the ALTA IoT Gateway's location data with an unlock code and application programming interface (API). Buy the ALTA IoT Gateway GPS Unlock code and turn on the GPS feature in a few simple steps using iMonnit.

### Power Accessory Magnets

Buy this magnetic pen or stylus to turn ALTA or ALTA XL Industrial IoT Gateways on or off. You can also use the magnet to power the ALTA Water Detection Puck Sensor.

The gateways and sensor have magnetic power buttons and utility reed switches that this magnetic pen operates. It's always good to have extra.

### Part Number

HDW-0040-02



## PoE Splitter and Power Adapters

### PoE Splitter

If you have a Monnit Ethernet Gateway that doesn't support Power over Ethernet (PoE), the PoE Splitter allows you to use an existing PoE line to power and communicate with the gateway. The PoE Splitter works by simply separating the power from the data and feeding it to a different input that a non-PoE-enabled device like a gateway can use.

### PoE Power Adapter

If your building or facility doesn't have PoE infrastructure, you need this PoE Power Adapter to run your Monnit PoE-X Sensors. It's easy to inject power into an Ethernet cable with our PoE Power Adapter. Deploy and power up PoE-X Sensors near or on virtually any asset that you need to give you data through a single PoE cable.

#### Part Number

PoE Splitter: OE-ADPT-ADS

PoE Adapter: PWR-0002-03



## Temperature Buffers

Monnit's Temperature Buffers are elegantly simple solutions that minimize false alarms and ensure the consistency of the temperature data that your sensors collect. Choose from a slim, plastic vial filled with glass beads or a compact plastic bottle containing a 60/40 glycol and distilled water mixture.

The vial's glass beads insulate a temperature sensor's lead, slowing the sensor's response time by up to 52%. It's a great choice to prevent false alarms in high-traffic walk-ins and cold storage used in foodservice and retail.

In food service, buffers minimize false alarms. Multiple false alarms may cause staff to ignore an actual alarm, setting the stage for failure, loss, or illness.

The bottle's glycol mixture closely mimics common ingredients, vaccines, and biological samples.

In clinical settings, buffers play a vital role in data integrity by ensuring that automatically collected temperature sensor data truly reflects cold storage conditions.

#### Part Number

Glass Beads: MNA-TB-GB

Glycol: MNA-TB-GL



## Water Detection Sensor Accessories

Daisychain up to 10 Water Rope Extensions to measure leaks or spills along paths, foundations, and more up to 100'. Optional extensions are ideal for expanding your existing water rope sensor's reach into food prep areas, manufacturing and process industries, data centers, or high-traffic walkways.

#### Part Number

MNA-N-WR-10



## Replacement Sensor Probes

The ALTA® Wireless Soil Moisture Sensor does the same for agriculture and water conservation. But they can't do it alone.

The Soil Moisture Probe is essential for sensing soil conditions and delivering timely data from the field or greenhouse.

### Soil Moisture Probe

The resistive granular matrix moisture element and a thermistor-based temperature element combine to measure soil water tension (matric potential) and temperature in different soil types. The moisture element works similarly to a plant's root by measuring water tension in its hydrophilic fabric-covered matrix material.

#### Part Number

CBL-0025-02



## Replacement Sensor Batteries

Monnit offers replacement batteries for your CC and AA battery-powered sensors; lithium AA batteries are also available for sensors subjected to extreme temps. All replacement batteries are sourced directly from their respective manufacturers to provide economical power sources for your hard-working sensors.

Beyond price, sourcing your batteries from Monnit can simplify ordering—streamline invoicing and warehousing with stock from one supplier.

#### Part Number

2032 Batteries: MNA-BT-CR-24

AA Batteries: MNA-BT-AA-24

Lithium AA Batteries: MNA-BT-AAL-24

Industrial Sensor Battery: BAT-0004-05



## Open-Closed Sensor Replacement Magnets

Ensure your ALTA® Wireless Open-Closed Sensors are in proper working order around the clock with replacement magnets. The aluminum, nickel, and cobalt (alnico) magnets are the main accessory of the Open-Closed Sensor that keeps the magnetic switch and trigger mechanism in operation.

Without the magnets, you can't detect the status of doors and windows or cabinets and containers. So it's a good idea to have some replacement magnets ready to be installed, just in case.

#### Part Number

CBL-0005-52



## High Gain Antennas

We offer three Monnit-compatible high-gain antennas for use in various wireless sensor networking environments. Our antenna options provide optimal data communications performance.

The Monnit High Gain Puck Antenna, 900 MHz 3.1 dBi Dipole Antenna, and our 5.1 dBi High Gain Rubber Duck Dipole Antenna deliver superior, industry-leading reliability and cover multiple data frequencies.

### Three Antennas with Versatile Options

#### Low-Profile Puck Antenna

- 1–3 decibels relative to an isotropic radiator (dBi)
- Transmission over 900 and 868 megahertz (MHz) bands
- Protected enclosure and waterproof
- Reverse Polarity-SubMiniature Version A (RP-SMA) male connector
- Flexible 3.1 dBi Dipole Antenna

#### Flexible 3.1 dBi Dipole Antenna

- Transmission on the 900 and 868 MHz bands
- Flexible rubber with omnidirectional motion
- RP-SMA Male connector
- Rubber Duck Dipole Antenna

#### Rubber Duck 5.1 dBi Dipole Antenna

- Omnidirectional transmission over 900–930 MHz bands
- Vertical and multi-angle tilt-and-swivel movement
- RP-SMA Male connector

#### Part Number

Puck Antenna: ANT-0012-01

3.1 Dipole Antenna: ANT-0009-01

5.1 High Gain Antenna: ANT-0010-01



BEP-Bestobell / Bestobell-Aquatronix  
2880 Argentia Road, Unit 3  
Mississauga, ON, L5N 7X8  
Tel 905-826-1953  
www.bestobell.com

BEP-Bestobell / Bestobell-Aquatronix  
970 Montée de Liesse, #204  
St. Laurent, QC, H4T 1W7  
Tél. 514-331-1225  
www.bestobell.com

BEP-Bestobell / Bestobell-Aquatronix  
166 North Side Road  
Riverport, NS, B0J 2W0  
Tel. 902-529-0355  
www.bestobell.com

