

## KD30 Series Float Level Switches



### Key features

- Horizontal or vertical mounting
- Rugged construction suitable for harsh marine environments
- Reliable and maintenance free
- Marine Type approved
- Single and multipoint switching
- Optional manual test mechanism

## **KD Series Mechanical Marine Float Level Switch**

Vertically mounted Marine float level switches, from PSM, provide high-level or low-level detection of liquids in all types of vessels.

PSM offers a wide range of float switch models that will suit each specific application, with single or dual levels switches and multiple combinations of high and low level functions.

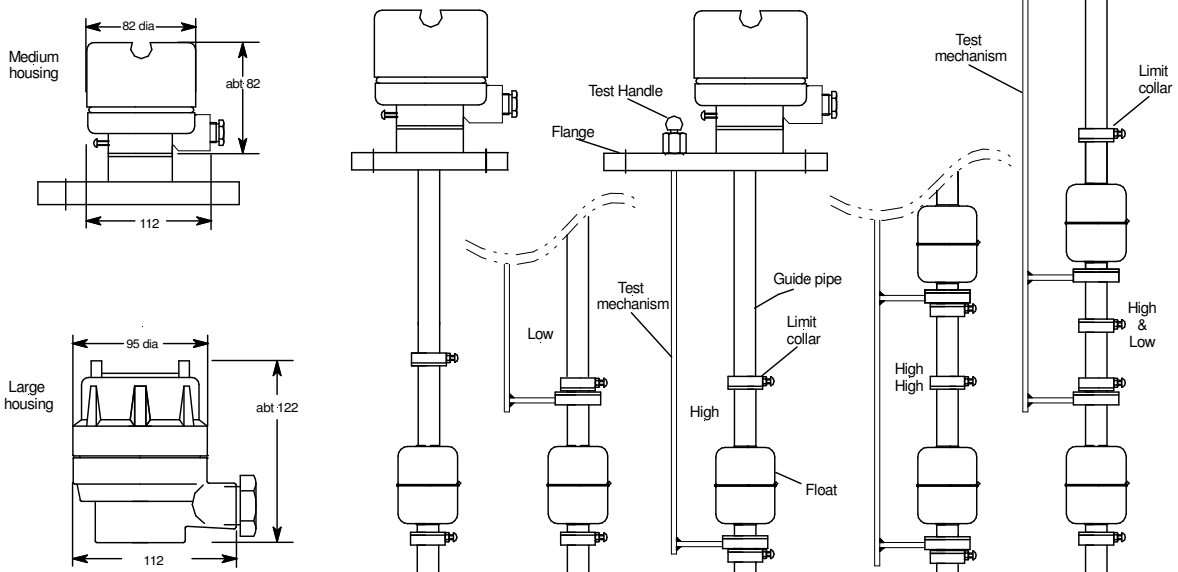
### **Vertical Mounting**

The KD30 switch is mounted vertically in the tank roof and uses a collar float with an internal magnet that activates a magnetic reed contact internal to the stem of the switch as the float rises or falls. Collars located on the stem limit the travel of the float (or floats on a multipoint switch) and ensure that the float holds the reed switch in the energised position while the alarm condition is present.

For the vertical switch types an optional external test handle allows checking of the switch operation from outside the tank irrespective of actual liquid level.

## KD30 Vertical Mounting Float Level Switch

Model Coding		Specification	
KD30	Reed Type Float level Switch	Max Pressure:	10 Bar
4M 5K 65A		Switch type	SPST Reed Switch
5M 5K 80 A		Contact Rating	250 VAC 0.5A
6L 5K 100A		Cable entry	3/4"
7L 10K 80A		Housing:	Epoxy coated aluminium
8L 10K 100A		Flange, Float and Support:	304 St. steel
9 Non Standard (specify)		IP rating	IP 56
10 4" ANSI 150lb			
1A High or Low alarm			
2A High & Low alarm			
W Weatherproof			
G Guide pipe with float			
T Manual test handle			
L Insertion Length mm			
L1 1A Switch Point mm			
L2 2A Switch Point mm			



Outline dimensions only. Contact PSM for dimensions depending on housing and float

© PSM INSTRUMENTATION LTD  
 Data Sheet Ref: DAT 34R October 2025

Subject to change without notice

PSM Instrumentation Ltd, Unit 3 Burrell Road, Haywards Heath, West Sussex, RH16 1TW. UK

BEP-Bestobell / Bestobell-Aquatronix  
 2880 Argenta Road, Unit 3  
 Mississauga, ON, L5N 7X8  
 Tel. 905-826-1953  
[www.bestobell.com](http://www.bestobell.com)

BEP-Bestobell / Bestobell-Aquatronix  
 970 Montée de Liesse, #204  
 St. Laurent, QC, H4T 1W7  
 Tél. 514-331-1225  
[www.bestobell.com](http://www.bestobell.com)

BEP-Bestobell / Bestobell-Aquatronix  
 166 North Side Road  
 Riverport, NS, B0J 2W0  
 Tel. 902-529-0355  
[www.bestobell.com](http://www.bestobell.com)