



Bestobell

Cryogenic Valves

Cryogenic Stainless Steel Lift Check Valve

DN6 - DN150 (1/4" - 6")

Description

Stainless steel lift check valves with bolted bonnet, integral seat and renewable PTFE disc, complete with bronze internals. Available with butt weld SCH.10 ends, the valve is of the cone seat design for drop tight shut off. The bolted bonnet allows easy maintenance, even in confined spaces with lower bolting torques required than for the equivalent size union bonnet valve.

All valves are degreased for oxygen duty, assembled in clean room conditions and pressure tested prior to despatch.

Maximum Working Pressure (MWP)

(Subject to End Connections)

50 Bar (725 psi) at -196°C to +65°C



Features

- Unique Bestobell loose flange bolted bonnet design allows for thermal expansion and contraction and eliminates leakage at the bonnet gasket
- PTFE seat to ensure tight shut off at all times
- Designed and engineered specifically for cryogenic service
- Full bore
- Fast/easy maintenance of PTFE components

Technical

Lift check valves size range DN6, DN10, DN15, DN20, DN25, DN40, DN50, DN 65, DN80, DN100 and DN150.

Designed and engineered for use with O₂, N₂, Ar, CO₂, He, Kr, Ne, H₂, C₂H₄ and N₂O service.

ISO 9001 accreditation – design and manufacture to ASTM B31.1 and BSEN 1626.

Optional full material traceability backed by BSEN 10204 3.1/3.2 certification.

CE Marking according to Pressure Equipment Directive 97/23/EC.

π Marking to Directive 99/36/EC only on written request complete with purchase order.

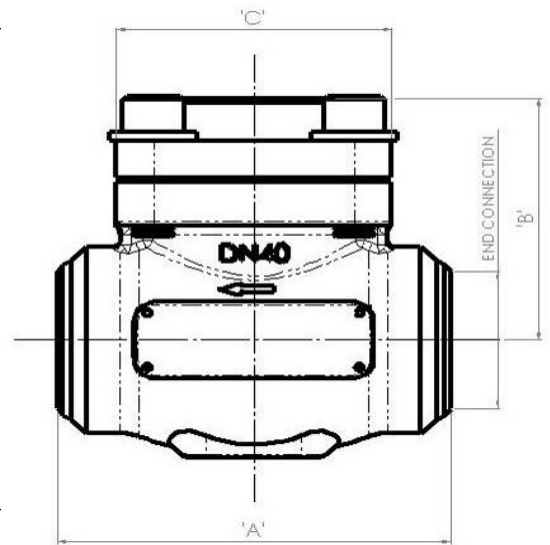
For other options please contact us.



Cryogenic Stainless Steel Lift Check Valve DN6 - DN150 (1/4" - 6")

Materials

Body	ASTM A351 CF8M
Bonnet	ASTM A276 316
Disc	BSEN 12164 CW 721R
Seal	PTFE
Gasket Bonnet	SIGMA 511
Bonnet Flange	ASTM A351 CF8M
Fasteners	BS6105 A4 Gr.80



Valve Selection Data

There are two steps to selecting the complete part number for a lift check valve;

1. First select the part number for the valve size from the Specifications section below, "CGT -- +"
2. Then select the end connection code from the table below.

Example: 25mm lift check valve with BW SCH.10 connections. Complete part number = CGT50B1B0C

	End connection	Extension
BW SCH.10	B1B0C	DN6, DN10, DN15, DN20, DN25, DN40, DN50, DN65, DN80, DN100 and DN150
SOCKET END	SNEB0C	DN6, DN10, DN15, DN20, DN25, DN40, DN50



BEP-Bestobell
www.bestobell.com

Specifications

Dimension	Unit	DN6 1/4	DN10 3/8	DN15 1/2	DN20 3/4	DN25 1	DN40 1 1/2	DN50 2	DN65 2 1/2	DN80 3	DN100 4	DN150 (bore mm) 6 (bore inches)
Part No		CGT10	CGT20	CGT30	CGT40	CGT50	CGT70	CGT80	CGT90	CGTA0	CGTB0	CGTD0
A	mm	68	68	68	76	92	121	146	217	254	292	292
B	mm	51	51	51	60	71	84	107	145	145	193	193
C	mm	55	55	55	66	66	81	108	130	133	169	169
Cv	US gpm	3.6	3.6	3.6	6.2	13.2	26.5	43.0	68	98	174	174
Weight	Kg	1.0	1.0	1.0	1.5	1.75	3.0	5.5	15	25	42	42

All dimensions / weights are approximate