

4.0"Ø

FEATURES

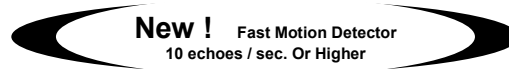
S.S. 316L Face Material c/w Ferrule Mtg.
Standard 5 feet of interconnection cable
Simple push-button calibration
Output 4- 20 mA / 20- 4 mA
Built-in temperature compensation
Optional High Level Alarm relay
dual pole output 5A/230 Vac
Optional RS485 communications
with calibration, diagnostics and data
logging software
PLC compatible
Three Wire Operation



Std. Teflon NPT Mtg.
High Temp. Sensor
(As Above)

Std. PVC 1" NPT Mtg.

HighTemp. & Pressure Sensor
S.S. Ferrule c/w S.S. Face



APPLICATIONS

Food and Beverages ,Water ,Pharmaceutical

ENVIRONMENTAL

Temperature :
Electronics Enclosure :- 40 to 140°F(- 40 to 60°C)
Continuous Operation
Std. & Sanitary Nozzle :- 40 to 140°F(- 40 to 60°C)
Teflon Std. Nozzle :- 40 to 266°F(- 40 to 130°C)
PVC Sanitary No Steam Cleaning (CIP)
S.S. Sanitary :- 40 to 266°F(- 40 to 130°C) for 1/2 Hr.
Ferrule Steam Cleaning. Removed sensor for
longer Cleaning cycle ,recommended.
Not for Continuous Operation
Pressure : 5 bar Max.
Installation Category: Class II

OPERATIONAL

Accuracy : +/-0.10% of max. range
(in lab using 4-20 Ma current output)
+/-0.25% of max. range (typically in field)
Response Time: Standard Unit 2 - 3 echoes / sec.
: Std. with less damping 6 echoes / sec.
: Fast Protocol **I.R. 10 echoes / sec.
Or More ** IF Required
Beam Angle : 10 - 12 degree at -3dB
Loss of Echo : Programmable from 1 min. to 4 min.
(Default = 1 min.)22mA or 2 mA output
Temp. Comp. : In transducer
Calibration : Push-button or programmable
via optional communications port
Diagnostics : (Echo Profile) via communications port
High Level Alarm 5A. Relay has hysteresis and delay
of 5% of the tank height, this can be adjusted using
communications software. Relay's state changes at
20mA calibration point or at 4 mA calibration point. To
switch the above "push-button" or "communication
software" can be used . Using push-button press and
hold until the light goes off. Continuous green light indic-
ates alarm at 20mA. ,blinking green indicates alarm
at 4 mA. Relay "ON" set point is adjustable using
communications software.

TECHNICAL SPECIFICATIONS

Range Code	Beam Angle	OPERATING RANGE	Resolution	Mounting
070	12°	0.8 - 33 ft. 0.2 - 10 m	0.03" 0.7 mm	2.0" NPT or 2" Ferrule
080	12°	0.8 - 20 ft. 0.24 - 6 m	0.03" 0.7 mm	2.0" NPT or 2" Ferrule
081	12°	0.6 - 16 ft. 0.18 - 4.9 m	0.07" 1.8 mm	1.5" NPT or 1.5" / 2" Ferrule
148	12°	0.33 - 6 ft. 0.10 - 1.8 m	0.03" 0.7 mm	1.0" NPT or 1.5" / 2" Ferrule

ELECTRICAL SPECIFICATIONS

Power DC	12 to 30 VDC , 0.07 A max @ 24 Vdc R load = (Vs — 6) / 24 mA
Output Optional	4-20 mA Output 6.1 uA resolution - communications port RS485 - Relay DPST 5A / 230 Vac

MECHANICAL

Std. Interconnection Cable -
5'- Belden #9503 : 3 Pair-24AWG
1) Supply 12 - 30 Vdc 1 pair shielded (Red/Blk.)
2) Output 4 - 20 mA 1 Pair shielded (Blk./Green)
3) Comm. RS485 (optional) 1 Pair Shielded (Blk./Wh.)
Optional Relay Cable -
5'- Belden #9493 :3-18 AWG unshielded
1) Relay (optional) SPDT 5A /230Vac
Enclosure PVC-94V0
Ingress Protection: NEMA 6 (IP68)

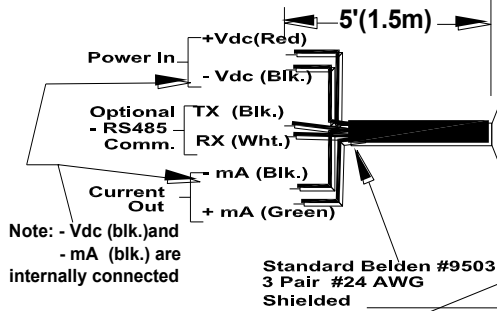
Catalogue # - On the Web return to Home page & Refer to Catalogue Numbering for Order Information!

"Mini Sonic" Std. Mtg. Ultrasonic Transmitters Interconnection Diagram

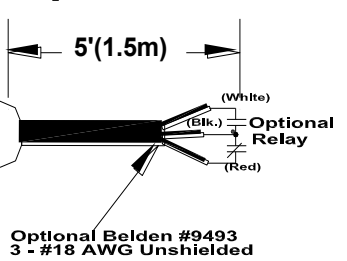


Interconnection Diag.

Standard Cable

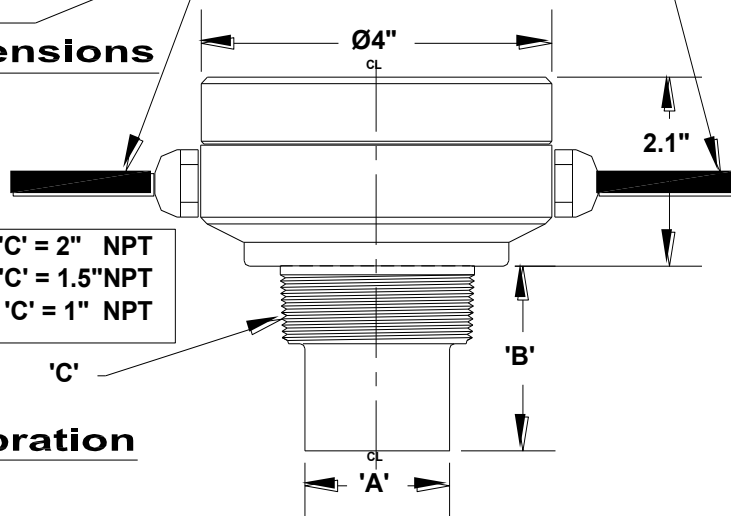


Optional Cable



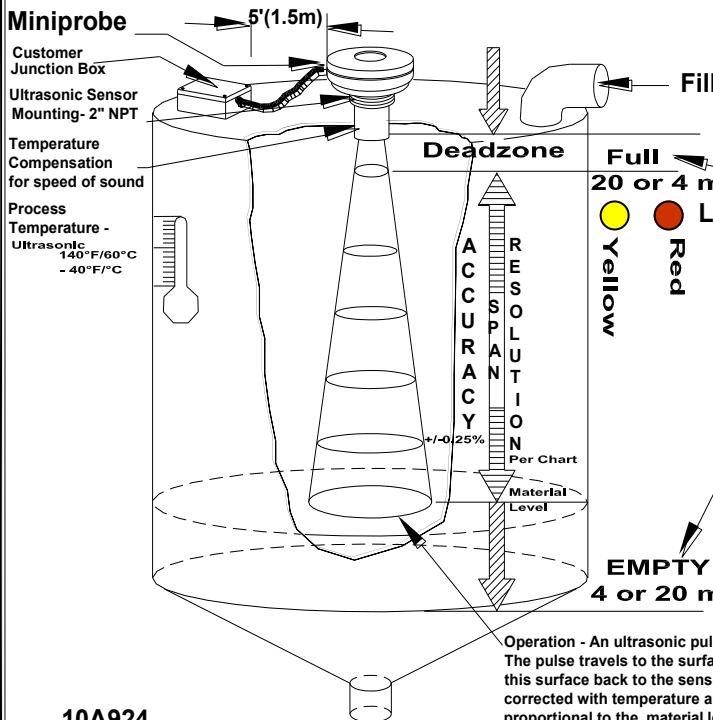
Calibration Switch

Mounting Dimensions



'A' -70 & 80KHz = 1.8" Ø 'B' = 2.2" 'C' = 2" NPT
 - 81 KHz = 1.5" Ø 'B' = 2.0" 'C' = 1.5" NPT
 -148KHz = 1.125" Ø 'B' = 1.95" 'C' = 1" NPT

Installation & Calibration



Calibration - 4-20 or 20-4 mA Output FULL - Calibration 20 mA or 4 mA (Set Near Target)

1. Calibration mode LED colour is Green.
2. Push button and hold until LED turns Yellow (20mA) or push button and hold until LED turns Red (4 mA).
3. Release button, observe LED flashes to acknowledge the calibration.

EMPTY - Calibrate 4mA or 20mA (Set Far Target)

1. Calibration mode LED colour is Green.
2. Push button and hold until LED turns Red (4mA) or push button and hold until LED turns Yellow (20ma).
3. Release button, observe LED flashes to acknowledge the calibration.

Operation - An ultrasonic pulse is transmitted from the ABM sensor. The pulse travels to the surface being monitored and is reflected off this surface back to the sensor. The time of flight is divided by 2, corrected with temperature and converted to an output signal directly proportional to the material level.

10A924

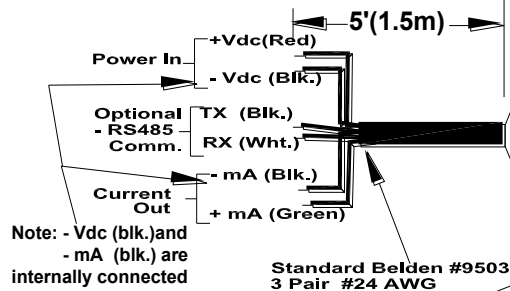
BESTOBELL
AQUATRONIX
 SINCE / DEPUIS 1953

"Mini Sonic" Sanitary Mtg. Ultrasonic Transmitters Interconnection Diagram

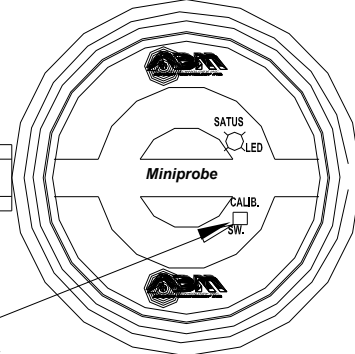
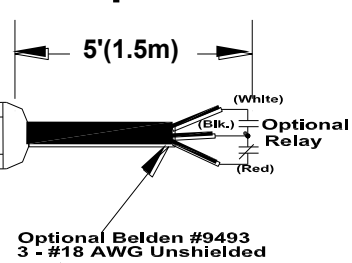


Interconnection Diag.

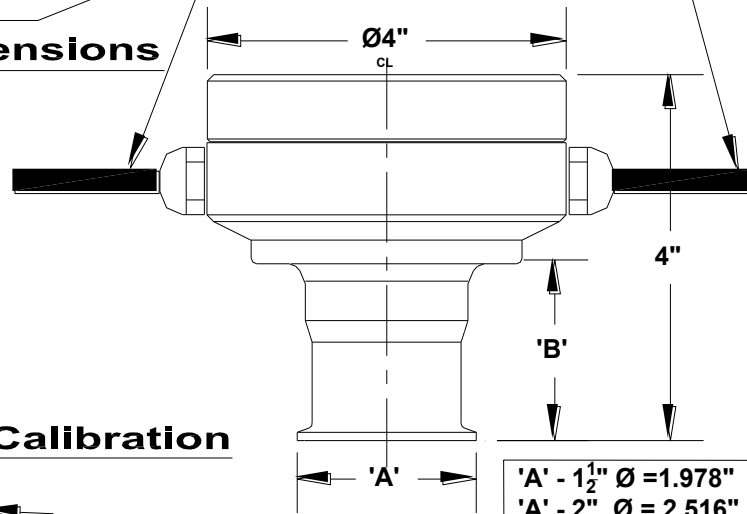
Standard Cable



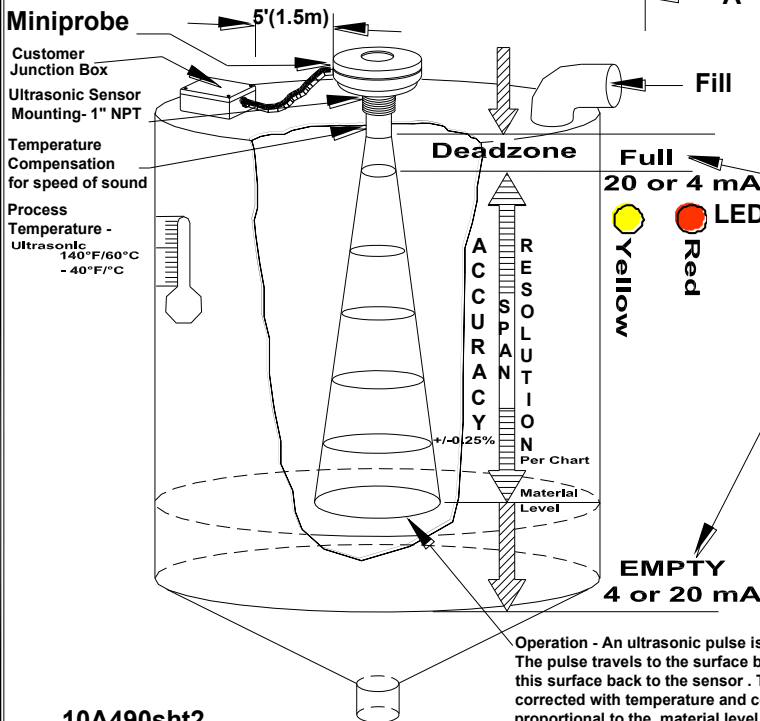
Optional Cable



Mounting Dimensions



Installation & Calibration



Calibration - 4-20 or 20-4 mA Output

FULL - Calibration 20 mA or 4 mA (Set Near Target)

1. Calibration mode LED colour is Green.
2. Push button and hold until LED turns Yellow (20mA) or push button and hold until LED turns Red (4 mA).
3. Release button, observe LED flashes to acknowledge the calibration.

EMPTY - Calibrate 4mA or 20mA (Set Far Target)

1. Calibration mode LED colour is Green.
2. Push button and hold until LED turns Red (4mA) or push button and hold until LED turns Yellow (20mA).
3. Release button, observe LED flashes to acknowledge the calibration.

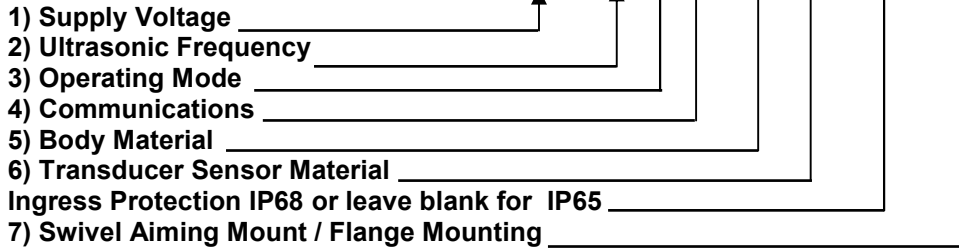
10A490sht2

Catalogue Numbering Structure - Ultrasonic Sensors



CATALOGUE NUMBER STRUCTURE

1) 2) 3) 4) 5) 6) 7)
ABMXXX - XXXYYCX - XXYYY - IP68 - XXXX



ABM Code **Eg. ABM400-148ULC0-PVS15**
1) Supply Voltage: AC 115V - 400 ABM 115volt 148KHz ultrasonic probe no communications
 AC 230V - 430 PVC body & Sanitary Nozzle 1.5" Tri clamp mounting
 DC 12-30V - 300
 Loop Powered DC 12-28V - 200

2) Frequency/Range:

Freq.	Ultrasonic Range	ABM Code
25KHz	1.4' - 90 ft.	025
	0.40 - 27.4 m	
45KHz	1.0' - 60 ft.	045
	0.30 - 18.2 m	
52KHz	0.9' - 50 ft.	052
	0.27 - 15.2 m	
70KHz	0.8' - 30 ft.	070
	0.24 - 9.1 m	
80KHz	0.7' - 20 ft.	080
	0.21 - 6.1 m	
81KHz	0.6' - 16 ft.	081
	0.18 - 4.9 m	
148KHz	0.4' - 9 ft.	148
	0.12 - 2.7 m	

Sanitary Mounting Option Available

ABM Code

3) Operating Mode : Ultrasonic Probe - UL
 Miniprobe UM - UM

ABM Code
4) Communications : RS485 - 4
 RS232 - 2
 None - 0

5) Body Material : **ABM Code**
Ultrasonic Standard PVC - PV
Ultrasonic High Temperature CPVC - CP
Optional Ultrasonic Aluminum - AL

ABM Code

6) Sensor Material Ultrasonic: Standard - Sensor PVC - PVC
 Optional - High Temp. Teflon - TEF
 Sanitary Mtg. Std. Temp. - 2" Tri clamp PVC - S20 For High Temp. / Pressure Sanitary Mtg. add - HTP
 - 1.5" Tri clamp PVC - S15 For High Temp. / Pressure Sanitary Mtg. add - HTP

Miniprobe Mounting Adaptor: Optional PVC 1" - 3/4" NPT - A34
 Optional PVC 1" - 1/2" NPT - A12

ABM Code
Miniprobe Optional: Relay Ultrasonic - REL
Ultrasonic Optional: Sensor High Temp. & Pressure - HTP

7) Swivel Aiming Mount : 8" O.D., .7,0" Bolt Circle - 6 @ 1/4" Dia. Holes C/W 3" Sensor Mtg. Hole - AIM3
Flange Mount : 9" O.D., .7,5" Bolt Circle - 6 @ 3/4" Dia. Holes C/W 6" Sensor Mtg. Hole - FLA6
 9" O.D., .7,5" Bolt Circle - 6 @ 3/4" Dia. Holes C/W 3" Sensor Mtg. Hole - FLA3

A) Relay Controller : ABM XXX XRCO - TST — "Tank Strapping Table" 33 Point
 3 Three Relays
 6 Six Relays
 AC/DC Power Code per #1 above.

Loop Powered Display : LPD - XX - 02
 Code: Probe Mount - PM or Wall Mount - WM

B) Open Channel Meter : ABM XXX OCM
 AC/DC Power Code per #1 above.

C) For special custom orders please call directly Tel. (416) 231-9216



Head Office
2880 Argentinia Road, Unit 3
Mississauga, ON L5N 7X8
salesdesk@bestobell.com
1-800-668-3979
www.bestobell.com

Montréal Office
970 Montée de Liesse, #204
St.Laurent, QC H4T 1W7
ventes@bestobell.com
1-877-331-1225

Atlantic Office
166 North Side Road
Riverport, NS B0J 2W0
dmossm@bestobell.com
902-529-0355

Since 1953, Quality Products to Sense, Measure & Control
Depuis 1953, Produits De Qualités Pour Détecter, Mesurer & Contrôler