



# WALL MOUNT 1 CHANNEL CONTROLLER

**BESTOBELL**  
**AQUATRONIX**

SINCE / DEPUIS 1953

BEP-Bestobell  
[www.bestobell.com](http://www.bestobell.com)

**MODEL 1GWA/V70**

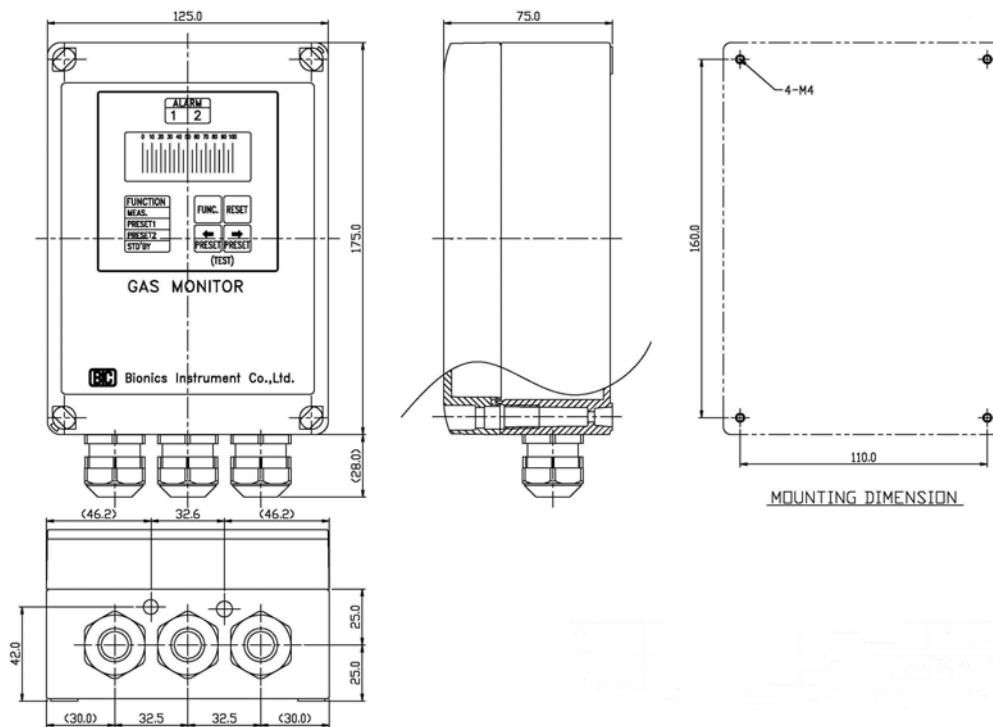


- ◆ Best seller simple model
- ◆ LED Bar-graph Green and Red color indicator
- ◆ 4–20mA DC 1 channel input
- ◆ Output
  - Isolated 4 – 20 mA DC output
  - Alarm 1, 2 and Error relay contacts
  - Local audio & visual alarm
- ◆ AC 100 – 240 V operation

# Specification

Model	1GWA/V70
Input signal	4-20mA / 1 channel
Display	20 dot LED bar graph
Alarm signal	Red lamp and busser
Analog output	DC 4 - 20mA (900Ω impedance)
Alarm relay contacts	A1: dry c, A2: dry c, Err: dry b (fail safe action)
Capacity of relay contacts	AC 125V, 0.4A max (resistive load)
Operating Temp. / Humidity	0 - 40°C/ 20 - 80% RH (no condensing)
Mounting style	Wall mount
Power requirement	AC 100 - 240V
Power consumption	Approx. 10 W (controller only)
Dimensions (mm)	Approx. 125(W) × 175(H) × 75(D)
Weight	Approx. 1 kg
Mounting dimensions (mm)	110 (W) × 160 (H)

# Dimensions



Unit: mm

✘We reserve the right to change specifications without notice.

**Bionics Instrument Co., Ltd.**

6-1254-2 Shimizu, Higashi-yamato, Tokyo, 207-0004 Japan  
 TEL: +81-42-561-4856 FAX: +81-42-563-9228  
 e-mail: [trade@bionics-japan.co.jp](mailto:trade@bionics-japan.co.jp) URL: <http://www.bionics-japan.co.jp/en/>

**BESTOBELL**  
**AQUATRONIX**  
 SINCE / DEPUIS 1953

BEP-Bestobell  
[www.bestobell.com](http://www.bestobell.com)

**BESTOBELL**  
**AQUATRONIX**  
 SINCE DEPUIS 1953

Head Office  
 2880 Argenta Road, Unit 3  
 Mississauga, ON L5N 7X8  
[salesdesk@bestobell.com](mailto:salesdesk@bestobell.com)  
 1-800-668-3979  
[www.bestobell.com](http://www.bestobell.com)

Montréal Office  
 970 Montée de Liesse, #204  
 St.Laurent, QC H4T 1W7  
[ventes@bestobell.com](mailto:ventes@bestobell.com)  
 1-877-331-1225

Atlantic Office  
 166 North Side Road  
 Riverport, NS B0J 2W0  
[dmoosman@bestobell.com](mailto:dmoosman@bestobell.com)  
 902-529-0355

Since 1953, Quality Products to Sense, Measure & Control  
 Depuis 1953, Produits De Qualités Pour Détecter, Mesurer & Contrôler