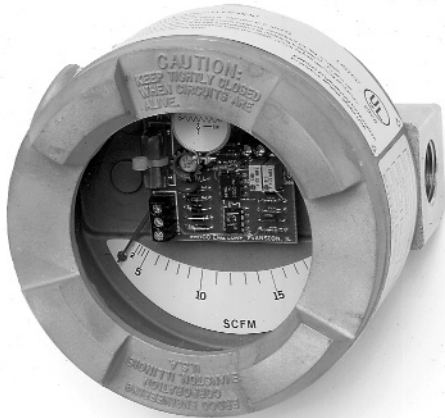


NEMA-7 Flowmeter/Transmitter/Switch



The 3700 Series meter measures the flow rate of liquid, gas or steam in vertical or horizontal pipelines. In addition, it provides flow proportional analog and digital signal outputs as well as switch options in an electrical enclosure appropriate for use in hazardous areas. Even without power, the flow rate indicator functions.

Several signal output options are available:

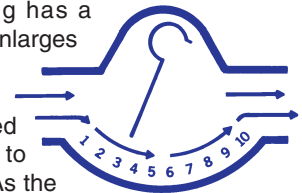
- 4-20 mA two wire loop powered transmitter. FM-15425
- 4-20 mA (requires 24V dc supply) with concurrent 0-1000Hz frequency output (requires 24V dc or 12V dc supply). FM-14792
- 4-20 mA transmitter with two adjustable setpoints. Contacts rated 1A @ 120V ac/2 @ 28V dc (requires a 24V dc supply). FM-14352
- Low flow limit switch. Adjustable 20-50% of full scale. SPDT contacts rated 0.25 A @ 120V ac/1.5 A @ 24V dc.
- High flow limit switch. Adjustable 50-90% of full scale. SPDT contacts rated 0.25 A @ 120V ac/1.5 A @ 24V dc.
- Low and high flow limit switches. There must be a 30% of full scale differential between low and high switch settings. SPDT contact rated 0.25 A @ 120V ac/ 1.5 A @ 24V dc.

Features

- UL Listed enclosure for use in hazardous locations.
- Low pressure loss.
- Install in horizontal or vertical pipe systems.
- Local flow rate indicator operates without power.
- Direct reading, each instrument is individually calibrated for the operating conditions specified.
- Available with six signal and switch options.

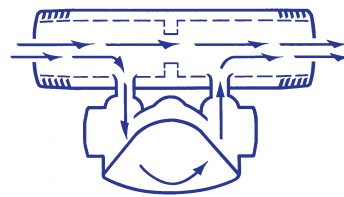
Principle of Operation

The Armor-Flo™ body housing has a variable internal volume which enlarges from the inlet to the outlet.



The primary sensor is a tempered alloy vane with one end affixed to the apex of the meter housing. As the flow rate changes, the vane is flexed in direct proportion. A Teflon® encapsulated magnet links the vane position with the pointer in the indicator housing and the signal output/switch circuit. All adjustments and electrical connections are accessible from the front of the meter housing.

The 1/2", 3/4" and 1" connections typically have female threaded ends. Sizes 1 1/4" through 6" utilize a shunt design. This integral



by-pass housing enables larger connection sizes in the format of a spool with a constant 12" end to end dimension. In addition, it permits a wide variety of connection types which include threaded, flanged, grooved-ends and tri-clamp.

Applications

- Water
- Air
- Compressed gasses
- Saturated steam (limit switches only)
- Fuels and lubricants
- Chemicals
- Coolants
- Vacuum service
- Nitrogen blanketing/purging

Specifications

Agency approval:

UL listed enclosure for metering equipment in hazardous locations:

- Class I Groups C & D
- Class II Groups E, F & G

Supply Voltage: 20-30V dc (FM-15425, FM-14792 and FM-14352)

12V dc (FM-14792 1000 Hz only)

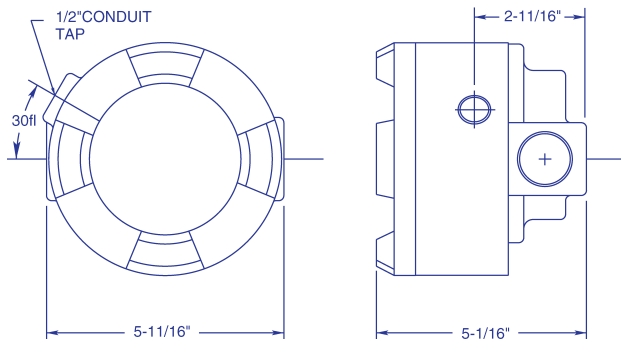
Supply Current: 50 mA (FM-15424)
200 mA (FM-14792 & FM-14352)

Accuracy: ± 2% Full Scale

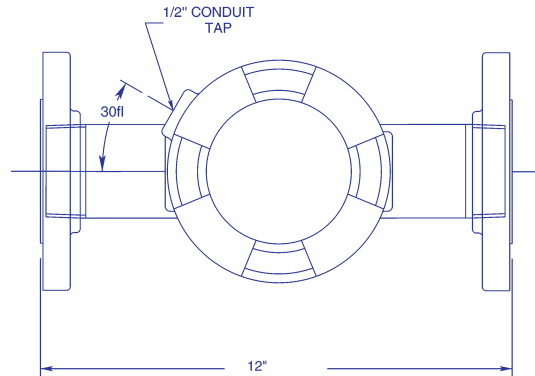
Repeatability: ± 1% Full Scale

NEMA-7 Flowmeter/Transmitter/Switch

3700 Series 1/2", 3/4", & 1" connections



3700 Series 1 1/4" to 6" connections



Temperature Limits:

- 0 to 85°C (32 to 185° F)
with transmitters FM-15425,
FM-14792, FM-14352
- 23 to 85° C (-10 to 185° F) with Teflon®
ring at constant temperature
conditions
- 23 to 121° C (-10 to 250° F)
with buna-n o-ring
- 23 to 204° C (-1- to 400° F)
with limit switches and Viton®
or ethylene propylene ring.

Materials of Construction:

- Housing: 316 stainless steel
- Shunt: 316 stainless steel or carbon steel
- Vane: Cobalt/chromium/nickel alloy
- Window: Tempered glass
- O-ring: Buna-n, ethylene propylene, Viton®
Teflon® or Kalrez®

Piping Connections:

- 1/2" to 1" NPT female (400 psig)
- 1 1/4" to 4" NPT male (200 or 400 psig)
- 1/2" to 3" Tri-clamp (200 psig)
- 1 1/4" to 6" Grooved (200 psig)
- 1 1/4" to 6" Beveled (200 psig)
- 1/2" to 6" 150# RF/FF ANSI
carbon stl flanges (200 psig)
- 1/2" to 6" 300# RF/FF ANSI
carbon stl flanges (400 psig)
- 1/2" to 6" 150# RF/FF ANSI
stainless stl flanges (200 psig)
- 1/2" to 6" 300# RF ANSI
stainless stl flanges (400 psig)
- 15 to 25 mm, DIN 2999/BS21 ISO R7
threaded female (27.6 barg)
- 15 to 150 mm, DIN PN 16
stainless stl or carbon stl
flanges(13.8 barg)

ERDCO reserves the right to alter design and/or specifications without notice. Viton,® Teflon,® and Kalrez® are registered trademarks of E.I. duPont de Nemours and Co. Hastelloy® is a registered trademark of Haynes International, Inc.

Model Number System

The example **3761-12F5** describes a 3700 Armor-Flo™ meter with a stainless steel body/carbon steel shunt for left to right flow. Connections are 3" 150# raised carbon steel flanges.

37 Series	6 Housing Material	1 Flow Direction	-	12 Size	F Type	5 Shunt Material
37-3700	6-Stainless Stl	1-L to R 2-R to L 3-Up 4-Down		02-1/2" (15mm) 03-3/4" (20mm) 04-1" (25mm) 05-1 1/4" (32mm) 06-1 1/2" (40mm) 08-2" (50mm) 10-2 1/2" (65mm) 12-3" (80mm) 16-4" (100mm) 20-5" (125mm) 24-6" (150mm)	T-NPT End F-Flange 150#RF G-Grooved H-Flange 150#FF J-Flange 300#RF K-Flange 300#FF L-Flange DIN PN 10/15 M-Metric Thread End N-Metric Thread Back P-Flange 600#RF R-NPT Back S-Tri-clamp W-Socket End 1/2"-1" X-Beveled	0-None 1-Aluminum 2-Brass 5-Carbon Steel 6-Stainless Steel 7-Carbon Steel 400 psig 8-Stainless Steel 400 psig